



# Transform FP&A for Business Central With Solver

June 26, 2025

# Business Technology Services

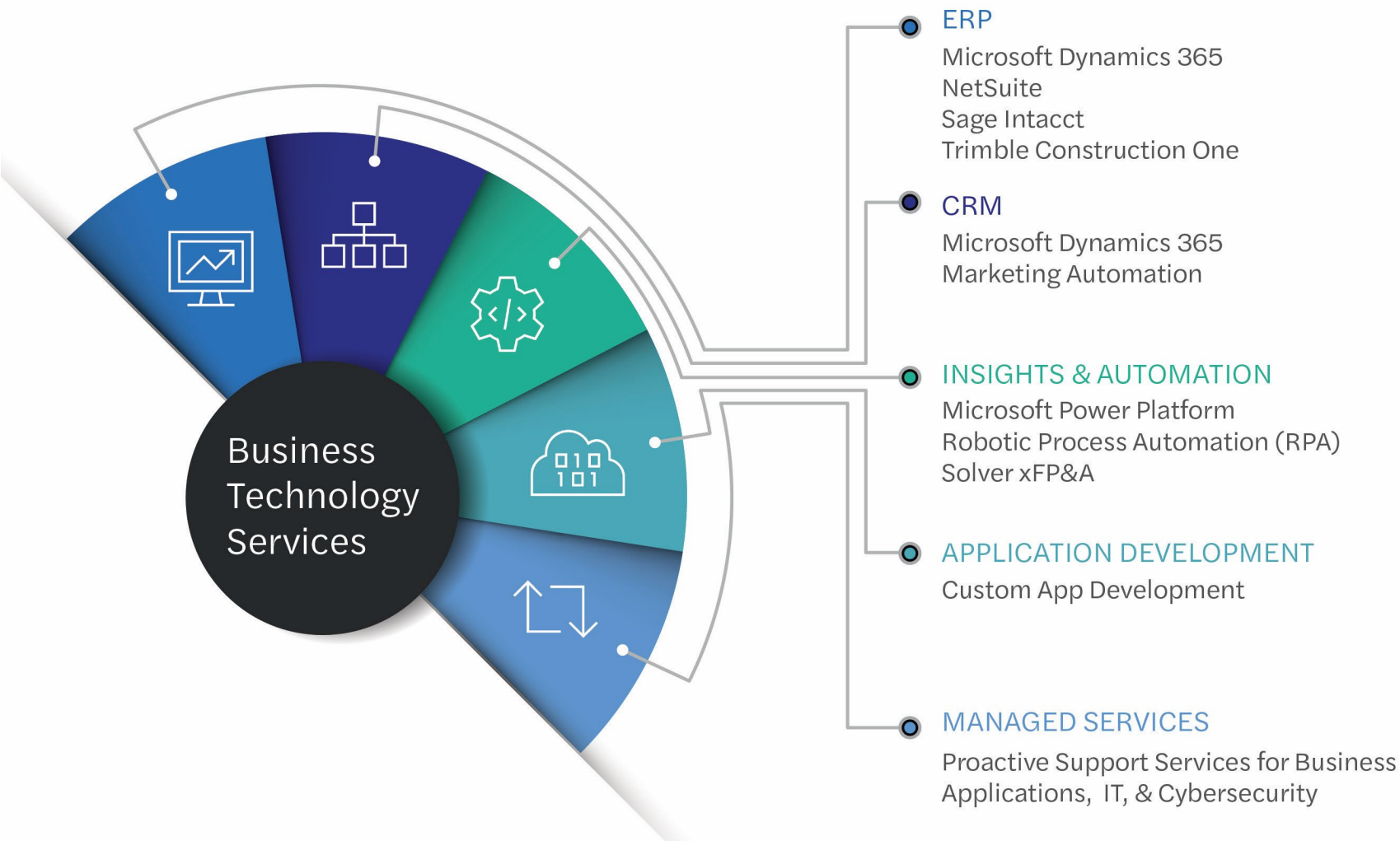
Forvis Mazars can help support your organization with enterprise resource planning (ERP), customer relationship management (CRM), advanced technology, & managed service solutions.

Our end-to-end services can help clients achieve their digital transformation goals & include:

- Technology assessments
- Design
- Implementation
- Upgrades
- Automation
- Training
- Monitoring
- Support



# Premier Technology Partnerships



Microsoft Partner



Trimble  
Construction One™



# Today's Presenter



## **Charles Allen**

Senior Managing Consultant

[charles.allen@us.forvismazars.com](mailto:charles.allen@us.forvismazars.com)

# Objectives

1. Recognize how Solver integrates with Business Central & other ERP systems to provide customizable reporting solutions
2. Describe how to create detailed budgets, perform accurate forecasts, & manage financial planning processes efficiently
3. Explain how Solver's data warehouse capabilities can help streamline various financial processes in Business Central, especially for those migrating from Dynamics GP or other ERP systems



# Agenda

1. What is Solver xFP&A?
2. Comparisons Between Solver & Business Central Reporting
3. QuickStart



# 01

## What is Solver xFP&A?



# What is xFP&A?

Extended Financial  
Planning & Analysis



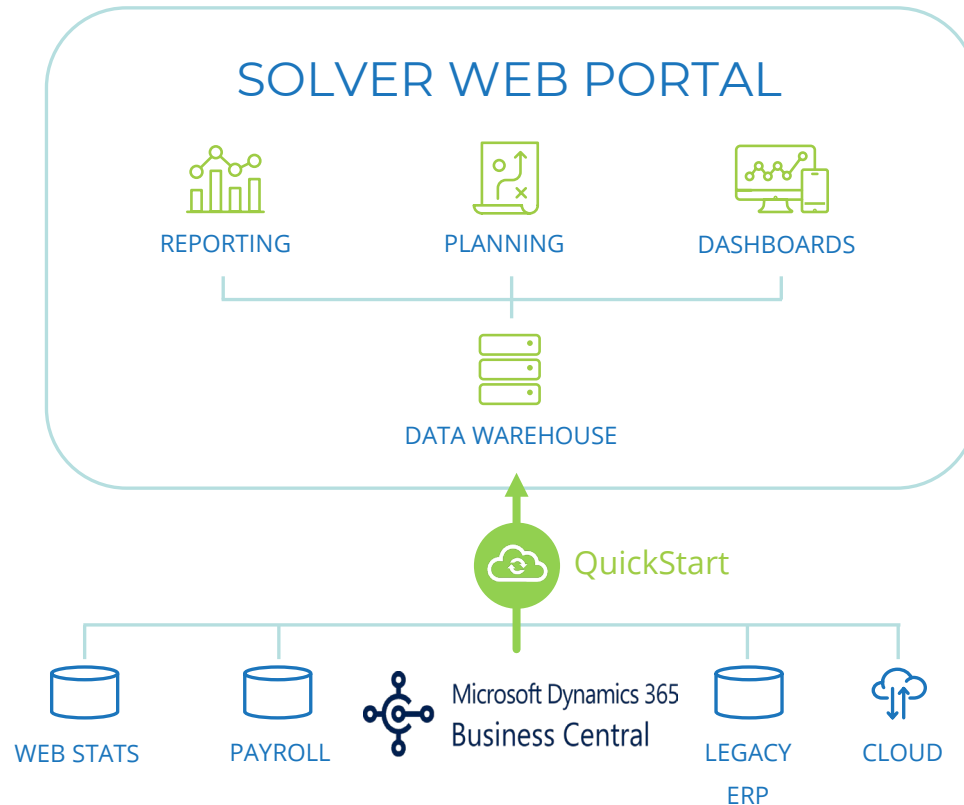


CEO

CFO

COO

CMO



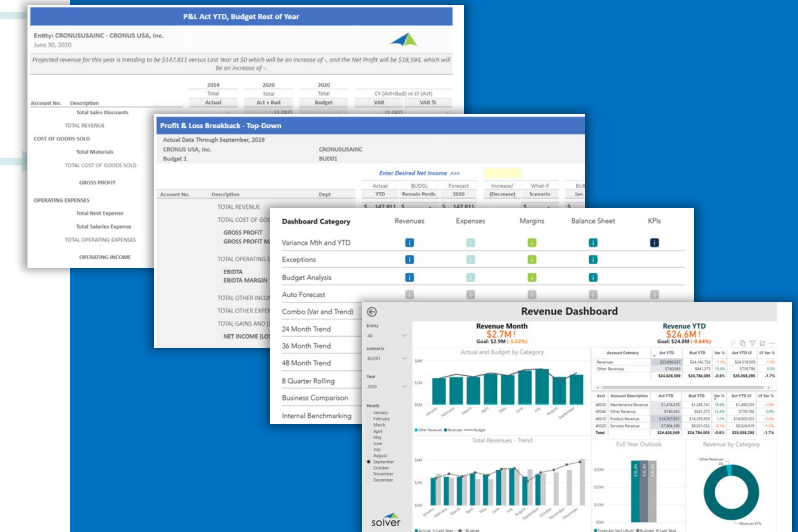
Download  
& Share  
Templates

Shop the  
Template  
Marketplace

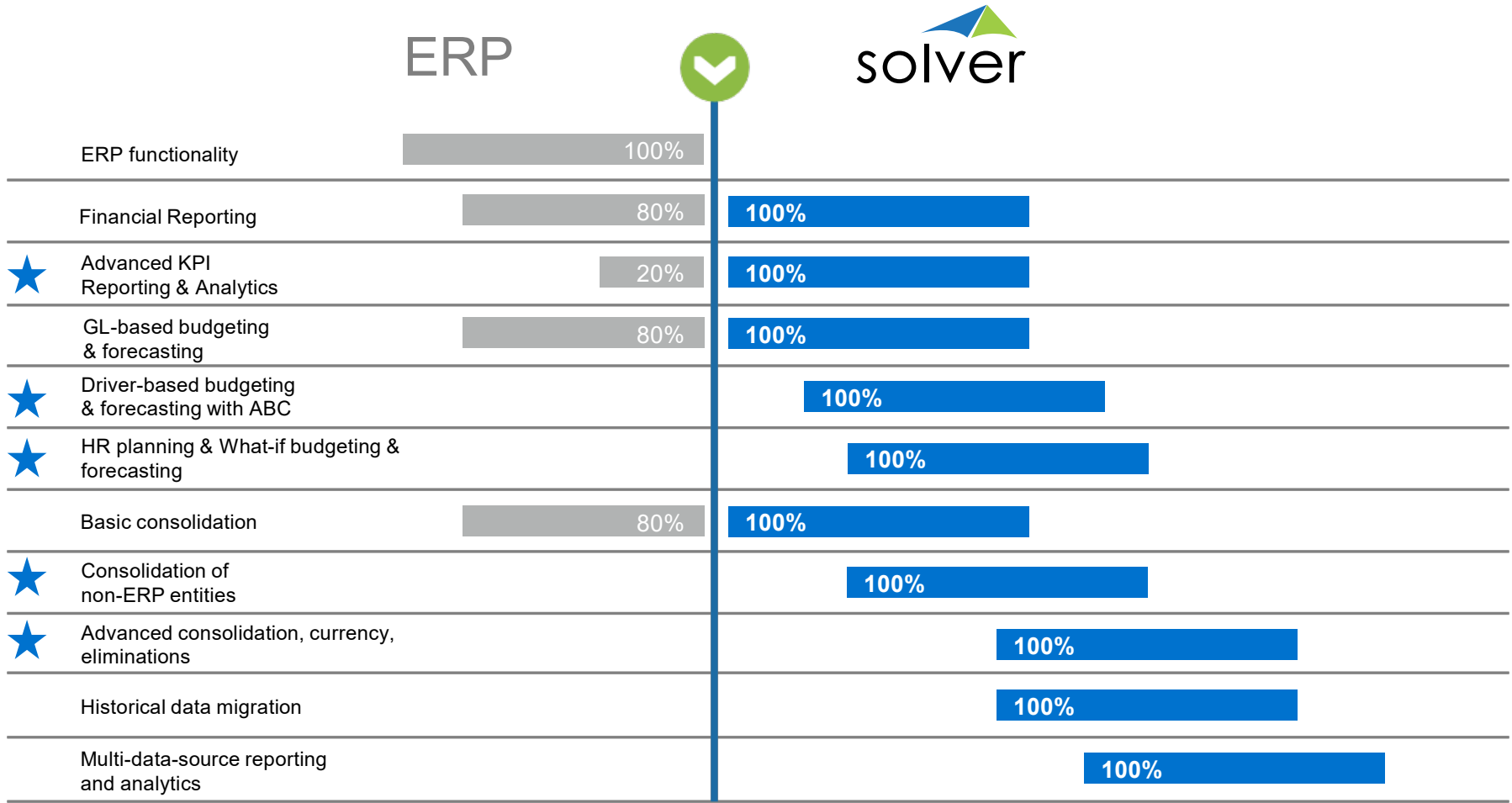
# Template Marketplace

Faster, Better Decisions

Plug-&-Play reports, budgeting & forecasting models, & over 50 Power BI Dashboards



# Solver Expands ERP Functionality





# solver



**EVERY USER  
RECEIVES**

**SOLVER SUITE**

**AZURE CLOUD**

**Security  
Scalability**

**eLEARNING**

**On-demand  
Certifications**

**DATA  
WAREHOUSE**

**Pre-built  
Configurable  
Connectors**

**REPORTING**

**Financial & Operational  
Consolidations  
Dashboards**

**MARKETPLACE**

**100+  
Ready-to-use  
Templates**

**PLANNING**

**Budgeting  
Forecasting  
What If Analysis**

# 02

## Comparisons Between Solver & Business Central Reporting



# Business Central Report Design

## Financial Reporting With Dynamic Row Definitions

- Utilizes rows & columns
- Row definitions are created based on the data in the chart of accounts
- Account-driven or subcategory
- Headers & totals

[←](#) Financial Reporting [🔖](#) [↗️](#) [↕️](#)

---

| 
 [+ New](#)
 [Edit List](#)
 [Delete](#)
 [View Financial Report](#)
 [Print/PDF](#) 
 ...

Name ↑	Description	Row Definition	Row Analysis View Name	Column Definition	Column
→ <a href="#">ACC-CAT</a>	: Account Categories overview	<a href="#">ACC-CAT</a>		<a href="#">PERIODS</a>	
<a href="#">ANALYSIS</a>	Capital Structure	ANALYSIS		BAL ONLY	
<a href="#">CASHFLOW</a>	Calculation Of Cash Flow	CASHFLOW		CASHFLOW	
<a href="#">I_CACYCLE</a>	Data for Cash Cycle Chart	I_CACYCLE		PERIODS	
<a href="#">I_CASHFLOW</a>	Data for Cash Flow Chart	I_CASHFLOW		PERIODS	
<a href="#">I_INCEXP</a>	Data for Income & Expense Ch...	I_INCEXP		PERIODS	
<a href="#">I_MINTRIAL</a>	Data for Reduced Trial Balance ...	I_MINTRIAL		PERIODS	
<a href="#">M-BALANCE</a>	Balance Sheet	M-BALANCE		M-BALANCE	
<a href="#">M-CASHFLOW</a>	Cash Flow Statement	M-CASHFLOW		M-NETCHANG	
<a href="#">M-INCOME</a>	Income Statement	M-INCOME		M-NETCHANG	
<a href="#">M-RETAIND</a>	Retained Earnings	M-RETAIND		M-NETCHANG	
<a href="#">REVENUE</a>	Revenues	REVENUE	REVENUE	BUDGANALYS	

# Business Central Report Design

## Row Design

Name ..... REVENUE

Manage

[Home](#)

Insert

More options

Outdent

Indent

Row No.		Description	Totaling Type	Totaling	Row Type	Amount Type
		<b>REVENUE</b>	Posting Accoun...		Net Change	Net Amount
			Posting Accoun...		Net Change	Net Amount
		Sales of Retail	Posting Accoun...		Net Change	Net Amount
11		Income, Services	Posting Accoun...	40440	Net Change	Net Amount
12		Income, Product Sales	Posting Accoun...	40100	Net Change	Net Amount
13		Job Sales	Posting Accoun...	40250	Net Change	Net Amount
14		Other Income	Posting Accoun...	40910..40330	Net Change	Net Amount
15		<b>Sales of Retail, Total</b>	Total Accounts	49990	Net Change	Net Amount
			Posting Accoun...		Net Change	Net Amount
		Revenue Area 10..55, Total	Posting Accoun...	40440..49990	Net Change	Net Amount
		Revenue Area 60..85, Total	Posting Accoun...	40440..49990	Net Change	Net Amount
		Revenue, no Area code, Total	Posting Accoun...	40440..49990	Net Change	Net Amount
		<b>Revenue, Total</b>	Posting Accoun...	40440..49990	Net Change	Net Amount

# Business Central Report Designer

## Column Design

Name.....

BUDGANALYS...

Manage

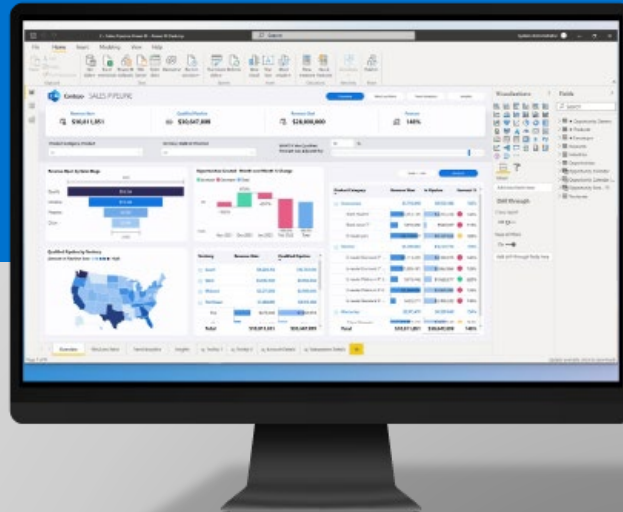
Copy Column Layout

More options

	Column No.		Column Header	Column Type	Ledger Entry Type	Amount Type	Budget Name	Formula	Show Opp... Sign	Comparison Date Formula
→	N	⋮	Net Change	Net Change	Entries	Net Amount			<input type="checkbox"/>	
	B		Budget	Net Change	Budget Ent...	Net Amount			<input type="checkbox"/>	
			Deviation from ...	Formula	Entries	Net Amount		100*(N/B-1)	<input type="checkbox"/>	
			Net Change Las...	Net Change	Entries	Net Amount			<input type="checkbox"/>	-1Y

# Demo

Microsoft  
Partner



# Solver Report Design

## Leveraging Solver for Expanded Financial Reporting

- Utilizes Excel With Solver add-in
- Rows & columns
- Dimensions & parameters
- Portal for viewing

Home

Process Manager

REPORTING

Ad Hoc Reporting

Report Templates

Publisher

Report Archive

PLANNING

Input Templates

Input Flow

Workflows

Assignments

Marketplace

Data Warehouse

Settings

Forvis Mazars

Good afternoon, Charles Allen

Activity

You're all caught up! Check back later for new activity

Recent

Favorites

Name	Last Opened	Type
B210 - Other Expenses	May 5	Input Templates
B204 - Personnel	May 5	Input Templates
B024 - Assumptions	May 5	Input Templates
GP - AR Aging	May 5	Report Templates
R106 - P&L - Analysis - Monthly	May 5	Report Templates
R100 - P&L - Modern	May 5	Report Templates
R100 - P&L - Modern	May 1	Report Templates
Test 20250417	Apr 17	Workflows
Revenue by Customer and Product	Apr 17	Ad Hoc Reporting

# Solver Report Design

## The Excel Design Experience

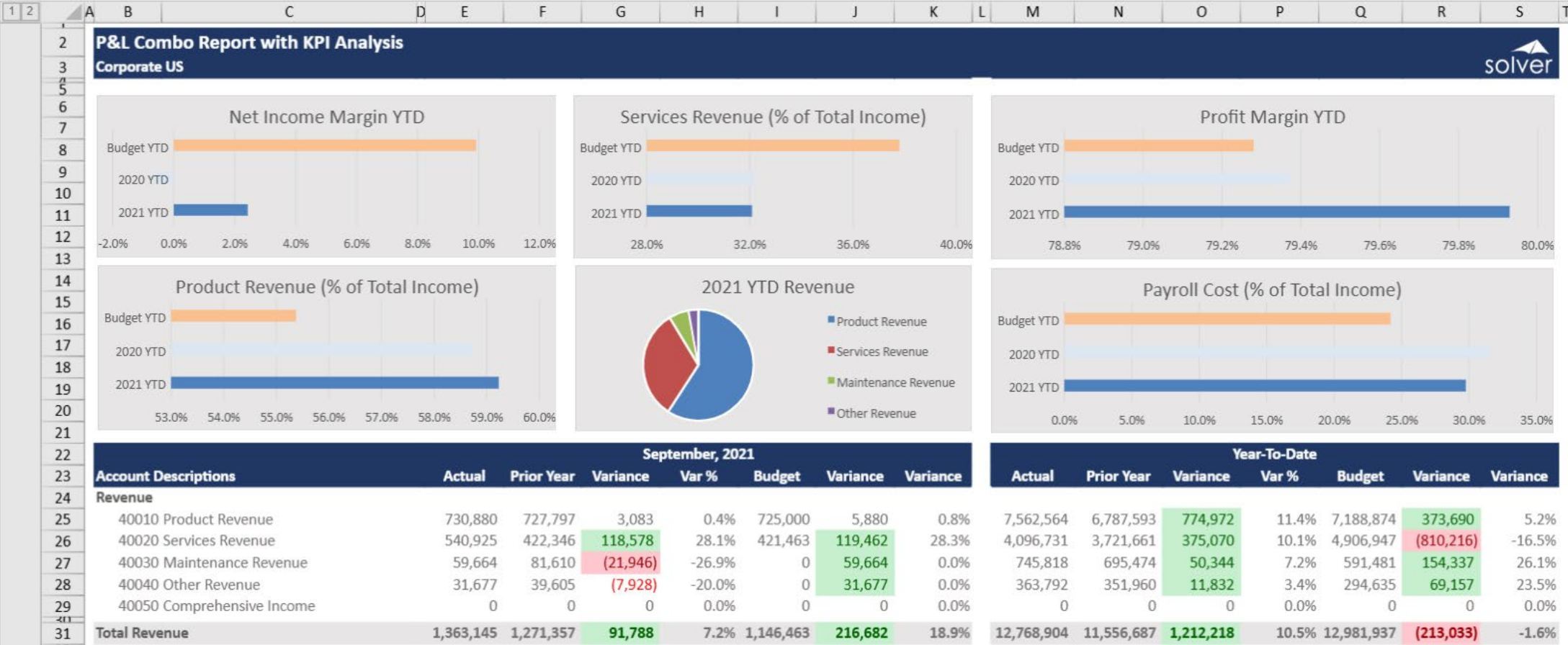
- Pull data from the Data Warehouse
- Filter & sort on any field
- Apply formatting to the report
- Add charts

The screenshot displays the Solver Report Designer interface. On the left, the 'Report Designer' pane shows a tree view of data sources under 'General Ledger', including 'Income\_Balance', 'Internal Reporting', 'Offset Account', 'Opex Entry', 'Originating Account', 'Rollup Level 1', 'Rollup Level 2', 'Status', 'Survey Type', 'Totaling', and 'Power BI Report Key'. The 'Rollup Level 1' item is highlighted with a red box. A red arrow points from this box to the 'Layout Editor' pane on the right. The 'Layout Editor' pane shows a table with columns A through Z and rows 1 through 25. The table contains data for 'Account Descriptions' and 'Actual' values. The 'Rollup Level 1' filter is applied to the 'Account' column, showing 'Rollup Level 1' in the filter area. The 'Layout Editor' also includes options for 'Expanding' and 'Display blank records', and a 'Limit' dropdown set to 0. The main report area shows a table with columns A through Z and rows 1 through 25. The table contains data for 'Account Descriptions' and 'Actual' values. The 'Rollup Level 1' filter is applied to the 'Account' column, showing 'Rollup Level 1' in the filter area. The 'Layout Editor' also includes options for 'Expanding' and 'Display blank records', and a 'Limit' dropdown set to 0.

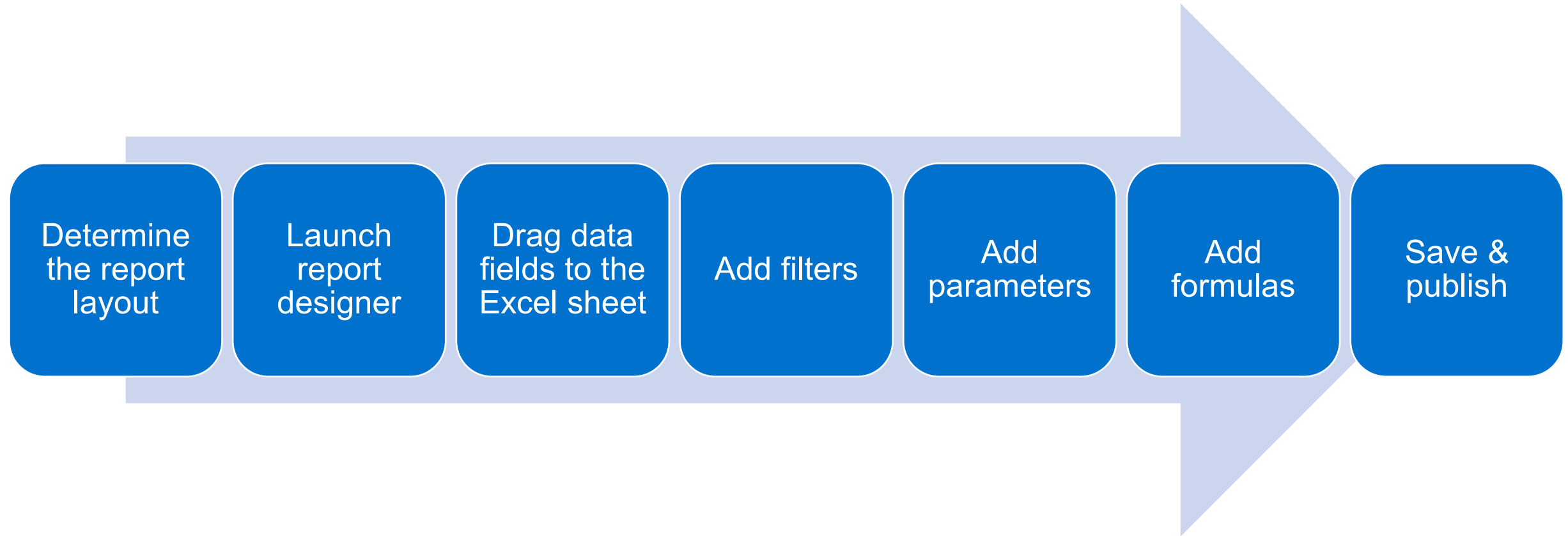
Account Descriptions	Actual
Revenue	
[Account] [Account Description]	#VALUE!
Total Revenue	#VALUE!
Cost of Goods Sold	
[Account] [Account Description]	#VALUE!
Cost of Goods Sold	#VALUE!
Profit Margin	#VALUE!
Profit Margin %	0.0%
Departmental Expenses	
[Account] [Account Description]	#VALUE!
lup Level 1]	0
Total Expenses	0
EBITDA	#VALUE!
EBITDA %	0.0%
Other Expenses	

# Solver Report Design

## Viewing a Report

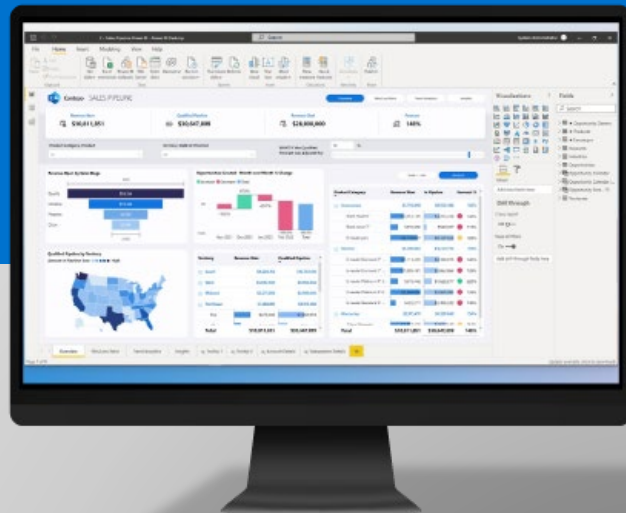


# Quick Steps to a Report



# Demo

Microsoft  
Partner



# Solver Reporting Features

---

Consolidations

---

Formatting

---

Dimensional

---

Report distribution

---

Non-GL data

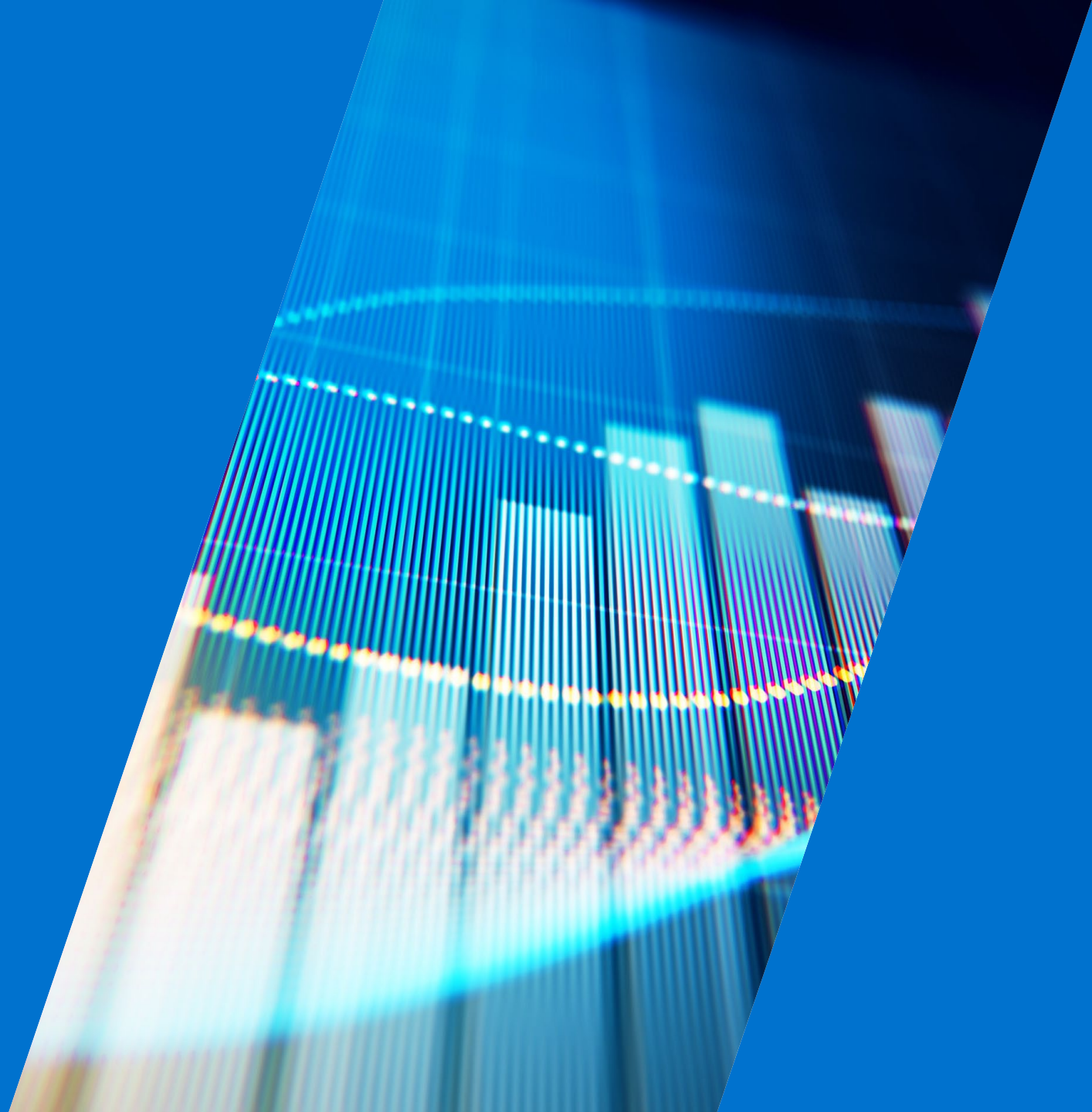
---

Non-BC data

---

# 03

## QuickStart



# QuickStart

## Reporting in a Day

- Use the QuickStart wizard to map your account categories
- Import the data (automatic)
- Go to the Solver template marketplace
- Download templates
- Start reporting

Marketplace

Reporting

Planning

☐ Financial Consolidations  
☐ Nonprofit  
☐ Senior Living

CRM

☐ Hubspot  
☐ Salesforce  
☐ MS Sales

D365 Business Central

☐ Control Reports  
☒ General Ledger Reports (22)  
☐ Accounts Payable Reports  
☐ Accounts Receivable Reports  
☐ Analysis Reports  
☐ Fixed Assets  
☐ Sales Reports

Sage Intacct

☐ Control Reports  
☐ General Ledger Reports (22)  
☐ Analysis Reports

Acumatica

☐ Control Reports  
☐ General Ledger Reports (22)  
☐ Analysis Reports

English

General Ledger Reports

Clear all filters

### R100 - Trial Balance

Languages English D365 Business Central General Ledger Reports

Sage Intacct Acumatica General Ledger Reports

D365 Finance QuickStart Compatible (QSC) General Ledger Reports

Add to install

### R101 - Trial Balance Multiple Entities as SPV

Languages English D365 Business Central General Ledger Reports

Sage Intacct Acumatica General Ledger Reports

D365 Finance QuickStart Compatible (QSC) General Ledger Reports

Add to install

### R110 - P&L Variance

Languages English D365 Business Central General Ledger Reports

Sage Intacct Acumatica General Ledger Reports

D365 Finance QuickStart Compatible (QSC) General Ledger Reports

Add to install

### R112 - P&L Act YTD, Budget Rest of Year

Languages English D365 Business Central General Ledger Reports

Sage Intacct Acumatica General Ledger Reports

D365 Finance QuickStart Compatible (QSC) General Ledger Reports

Add to install

Profit & Loss - Forecast Summary

P&L Aging 10 Years

6 Quarter Rolling P&L

Gross Margin Analysis

# Q&A



Business  
Technology  
Services

## Questions?

# Contact

## Forvis Mazars



### Charles Allen

Senior Managing Consultant

[charles.allen@us.forvismazars.com](mailto:charles.allen@us.forvismazars.com)

The information set forth in this presentation contains the analysis and conclusions of the author(s) based upon his/her/their research and analysis of industry information and legal authorities. Such analysis and conclusions should not be deemed opinions or conclusions by Forvis Mazars or the author(s) as to any individual situation as situations are fact-specific. The reader should perform their own analysis and form their own conclusions regarding any specific situation. Further, the author(s)' conclusions may be revised without notice with or without changes in industry information and legal authorities.

© 2025 Forvis Mazars, LLP. All rights reserved.