

# FORVIS

## Healthcare Revenue Reporting Using Solver

June 16, 2022

# TO RECEIVE CPE CREDIT

- **Individuals**

- Participate in entire webinar
- Answer polls when they are provided

- **Groups**

- Group leader is the person who registered & logged on to the webinar
- Answer polls when they are provided
- Complete group attendance form
- Group leader sign bottom of form
- Submit group attendance form to [trainings@forvis.com](mailto:trainings@forvis.com) within 24 hours of webinar

- If all eligibility requirements are met, each participant will be emailed their CPE certificate within 15 business days of webinar. Due to the large volume of certificates of completion issued, requests to re-issue lost or misplaced certificates will be honored up to 60 days following the webinar

# Presenter



**Charles Allen**  
Senior Consulting Manager

713.499.4629  
Charles.Allen@forvis.com

---

# AGENDA

- 9:00 AM ● Introductions
- 9:05 AM ● The Case for a Reporting Solution
- 9:10 AM ● Designing the System
- 9:30AM ● Reporting & Dashboards

# The Case for a Reporting Solution

---

**FORV/S**

FORVIS is a trademark of FORVIS, LLP, registration of which is pending with the U.S. Patent and Trademark Office

# Components of a Reporting Solution

A single  
source of  
truth

Financial &  
non-financial  
data

Statistical  
data

Ease of data  
collection

Built for lots  
of data

Fast  
reporting

**FORV/S**

# Components of a Reporting Solution

Providers

Patients

Procedures

Charge  
Codes

Departments

Encounter  
Types

Accounts

# Components of a Reporting Solution

Multiple data  
sources

ERP

EHR



# Designing the System

---

**FORV/S**

FORVIS is a trademark of FORVIS, LLP, registration of which is pending with the U.S. Patent and Trademark Office

# Designing the System

- Dimensions
- Modules
- Connections
- Scheduled Integrations



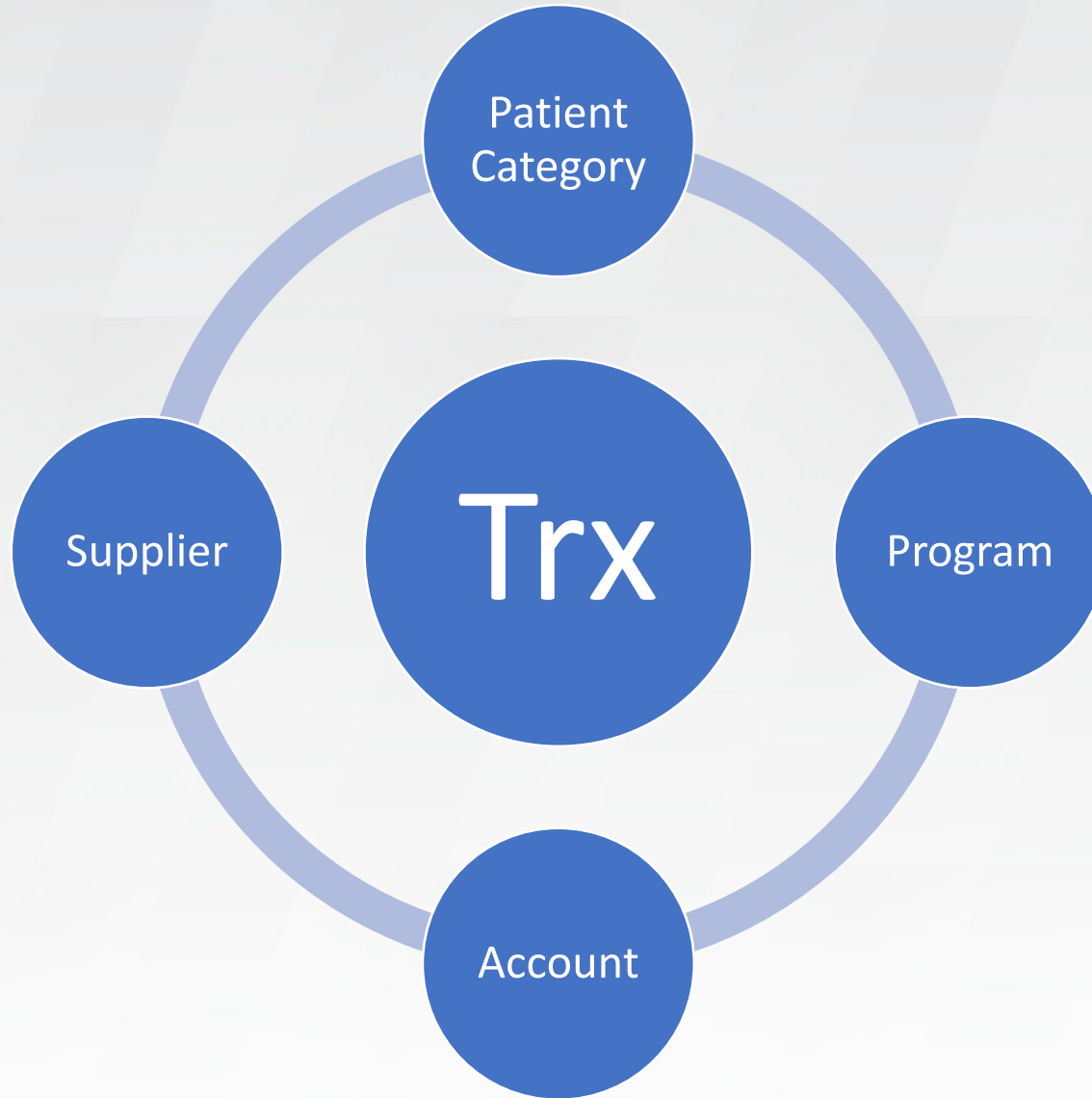
# Reporting features

- Browser-based reports
- Excel add-in
- Parameter-driven
- Drill down
- Automated
- Ad hoc



# Dimensions

- Typically used for master or setup data
- Contain unique codes & information about them



# Module

- Stores the activity or transactions
- Contains a link to the dimensions
- Stores additional columns for the transactions
- Stores values to be measured

**FORV/S**





# Connections

Pre-built connectors to different sources

- Excel/CSV
- OData
- SQL Server
- Dynamics
- Sage Intacct
- NetSuite
- QuickBooks Online
- SAP Business ByDesign
- SAP Business One – HANA
- Acumatica
- Other

# Reporting & Dashboards

---

**FORV/S**

FORVIS is a trademark of FORVIS, LLP, registration of which is pending with the U.S. Patent and Trademark Office

# Top 20 Service Group Charges

Example showing the ability to drill down to get details

**Top 20 Service Group Charges**  
 Period: January, 2024

	Revenue	Revenue(%)	Total
360 Operating Room Services	169,378	14.0%	169,378
333 Radiology-Therapeutic	126,971	10.5%	126,971
610 Magnetic Resonance Imaging (MRI)	110,008	9.1%	110,008
636 Drugs Requiring Specific Identification	102,826	8.5%	102,826
341 Nuclear Medicine	89,457	7.4%	89,457
481 Cardiology	88,845	7.3%	88,845
361 Operating Room Services	80,761	6.7%	80,761
320 Radiology-Diagnostic	76,488	6.4%	76,488
430 Occupational Therapy	38,888	3.2%	38,888
420 Physical Therapy	32,899	2.7%	32,899
480 Cardiology	31,204	2.6%	31,204
402 Other Imaging Services	30,727	2.5%	30,727
485 Nuclear Medicine	13,225	1.1%	13,225
All Other	77,945	6.4%	
<b>Total</b>	<b>1,209,018</b>	<b>100.0%</b>	<b>1,131,073</b>
<b>Top 20 Revenue Sources</b>	<b>1,131,073</b>	<b>93.6%</b>	

CHOOSE DRILLDOWN  
 Charges



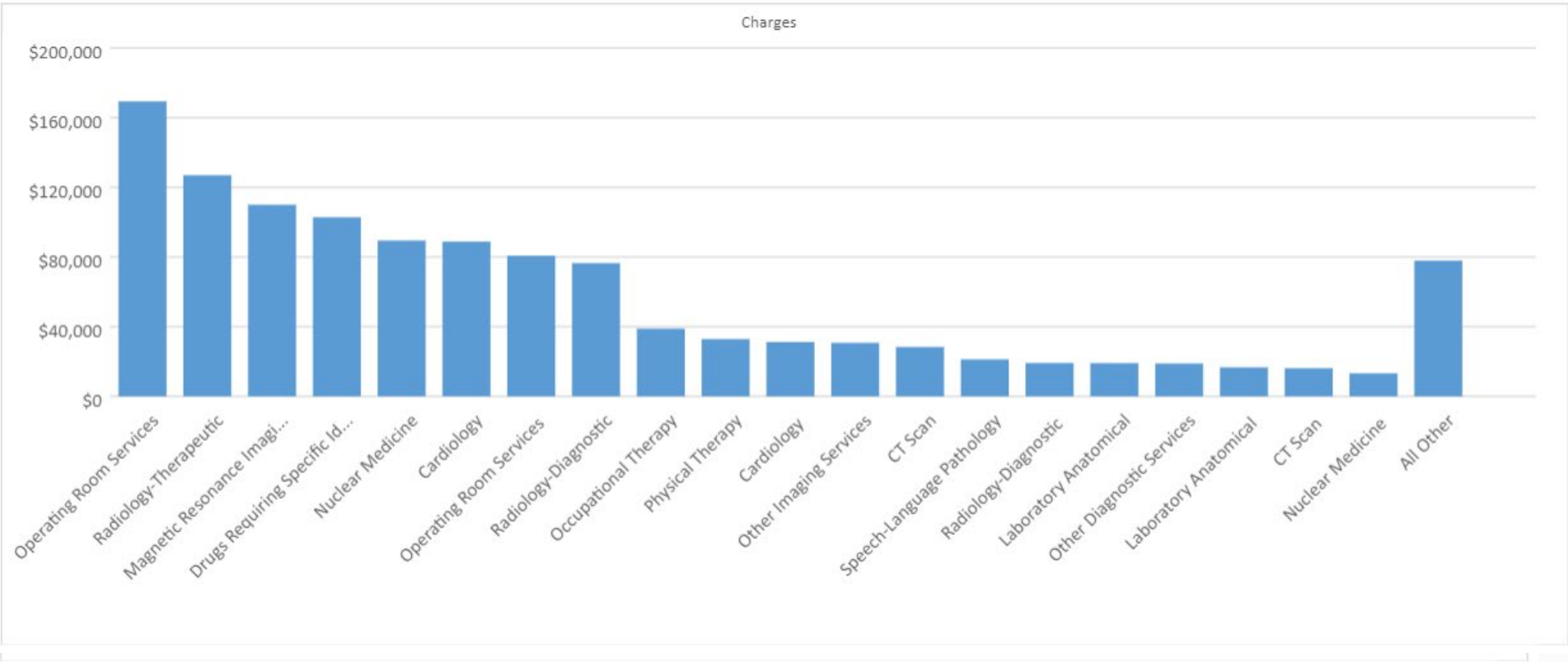


# Service Group Charges



BI360 Health Care

Service Group Charges and Percent of Total  
for January, 2024



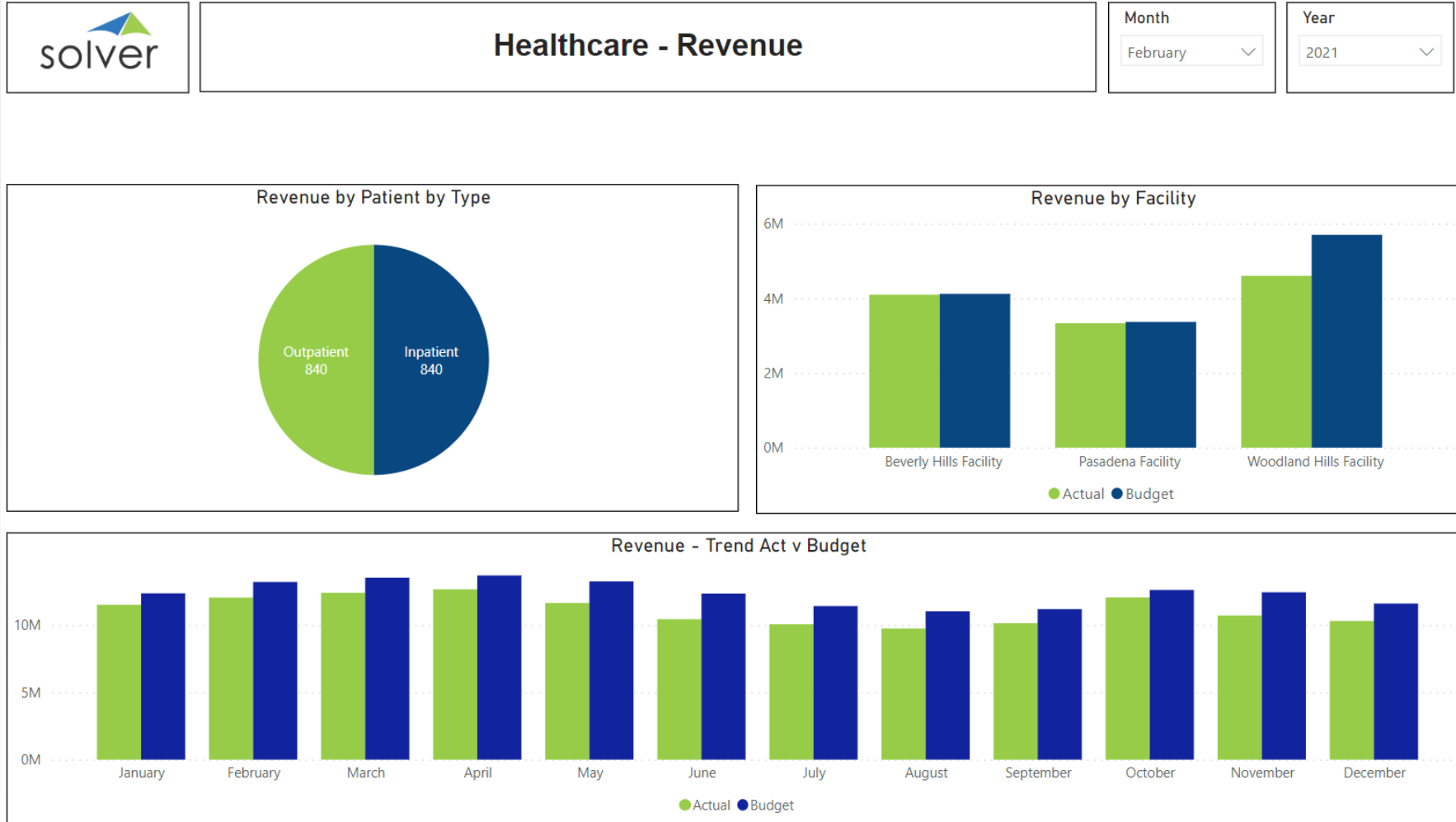
# Monthly Billings by Biller

**BI360** BI360 Health Care  
Monthly Billings by Biller Reports  
for 2024

		Bill Amount	Collection Amount	% Total	Collection Rate
109	James Tiberias	336,889	283,078	27.9%	84.0%
105	Larry Squaker	188,304	153,406	15.6%	81.5%
102	Carrie Fisherman	141,815	123,435	11.7%	87.0%
103	Marcus Hammer	128,268	98,500	10.6%	76.8%
106	Henry Duo	101,179	77,293	8.4%	76.4%
101	Anne Polly	88,605	69,661	7.3%	78.6%
110	Ben Spock	73,384	62,054	6.1%	84.6%
107	Artie Deetoo	65,128	49,840	5.4%	76.5%
108	Cherry Grand	47,411	41,249	3.9%	87.0%
104	Harry Ferrari	38,034	30,642	3.1%	80.6%
	<b>Total</b>	<b>1,209,018</b>	<b>989,157</b>	<b>100.0%</b>	<b>81.3%</b>

*Under 78% collection Rate*

# Dashboards



# Dashboards



## Healthcare - Charge Summary Dashboard

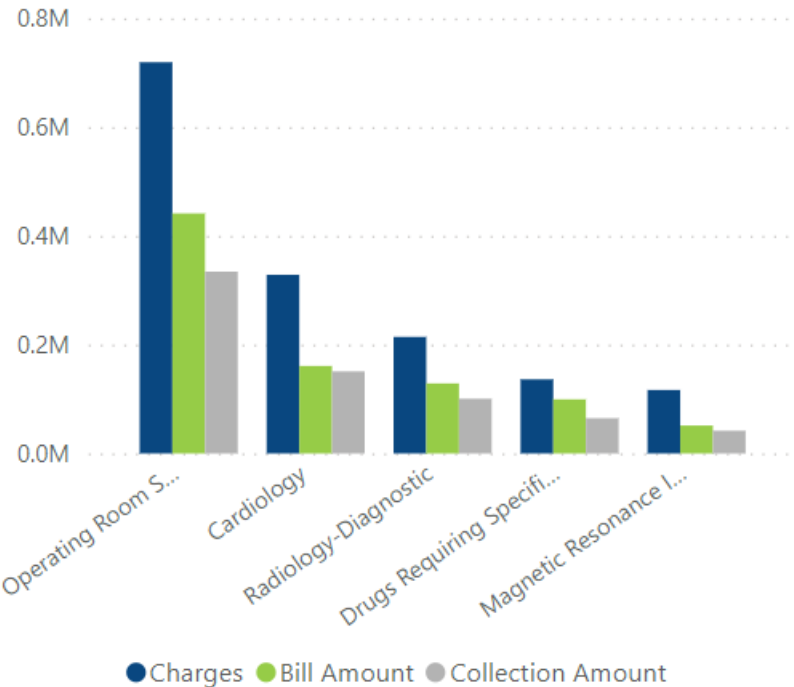
Month

February

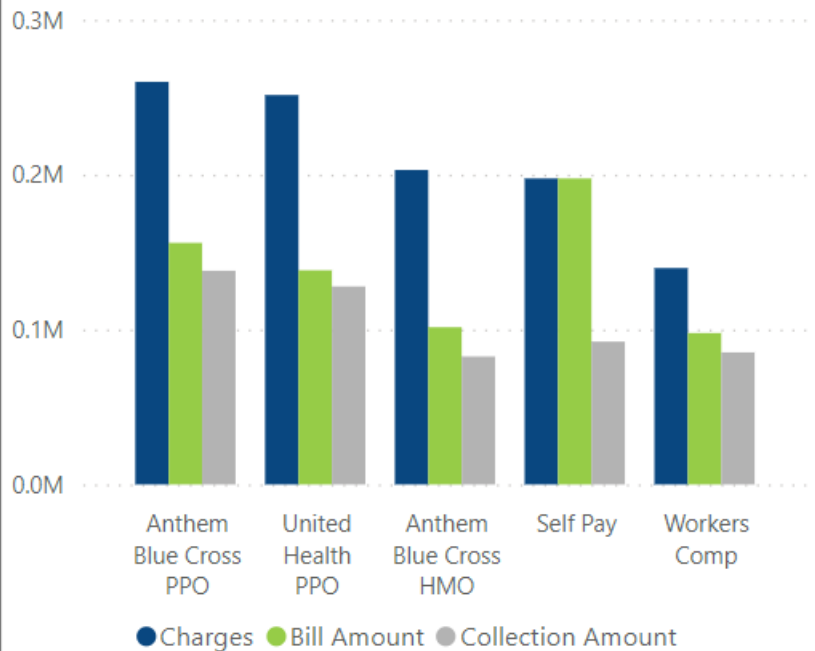
Year

2024

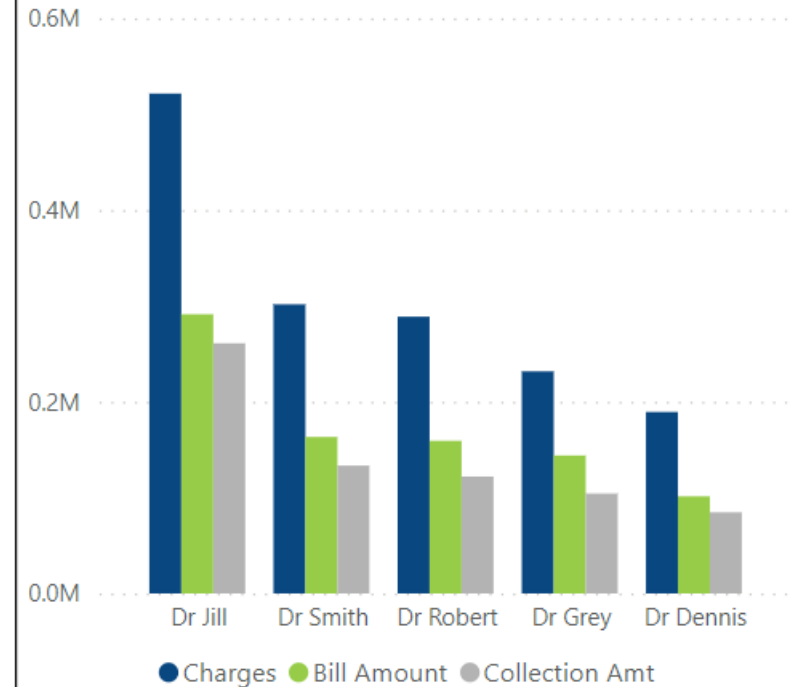
Top 5 Services by Charge, Bill Amount and Collection



Charges, Bill Amount, Collection Amount by Insurance Payor



Charges, Bill Amount, Collection by Physician



**FORV/S**



# CONTINUING PROFESSIONAL EDUCATION (CPE) CREDIT



**FORVIS, LLP** is registered with the National Association of State Boards of Accountancy (NASBA) as a sponsor of continuing professional education on the National Registry of CPE Sponsors. State boards of accountancy have final authority on the acceptance of individual courses for CPE credit. Complaints regarding registered sponsors may be submitted to the National Registry of CPE Sponsors through its website: [www.nasbaregistry.org](http://www.nasbaregistry.org)

**FORV/S**

# CPE CREDIT

- CPE credit may be awarded upon verification of participant attendance
- For questions, concerns, or comments regarding CPE credit, please email FORVIS at [trainings@forvis.com](mailto:trainings@forvis.com)



WEBINAR

# Thank you!

[forvis.com](https://forvis.com)

The information set forth in this presentation contains the analysis and conclusions of the author(s) based upon his/her/their research and analysis of industry information and legal authorities. Such analysis and conclusions should not be deemed opinions or conclusions by FORVIS or the author(s) as to any individual situation as situations are fact specific. The reader should perform its own analysis and form its own conclusions regarding any specific situation. Further, the author(s) conclusions may be revised without notice with or without changes in industry information and legal authorities. FORVIS has been registered in the U.S. Patent and Trademark Office, which registration is pending.

# FORVIS

Assurance / Tax / Advisory