



Applying Real-World E-Discovery Insights to Modern Investigations **Forensic Intelligence Services**

Lanny Morrow & Sean Leonard | May 7, 2026

Today's Roadmap

1. E-Discovery
2. Forensic Intelligence Framework
3. Open-Source Intelligence (OSINT)
4. Data Analytics



01

E-Discovery



The Value of E-Discovery

EDRM



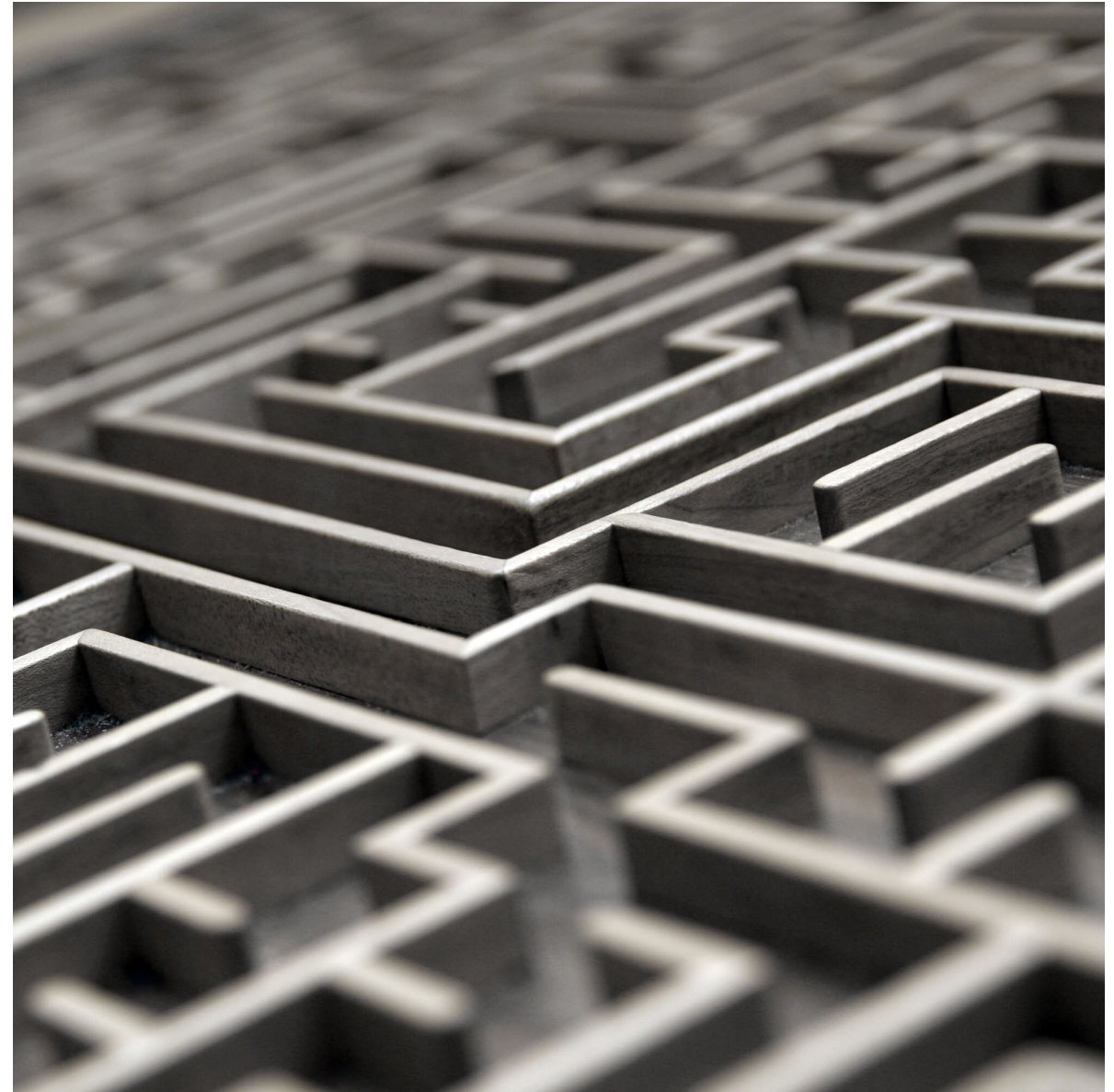
Key Benefits

- Cuts through the noise
- Improves speed, consistency, and efficiency
- Centralized evidence across sources
- Applies insight to unstructured data
- Applicable across a broad range of matters
- Scales across investigations and disputes
- Proactive risk identification

Complexity of Current E-Discovery

Key Challenges

- Lacks context
- Massive increases in data volumes
- Increase in data diversity
- Higher expectations for speed and precision
- Cost pressures



Structured Data vs. Unstructured Data



The Value of E-Discovery

EDRM



Why Deeper Analysis Matters

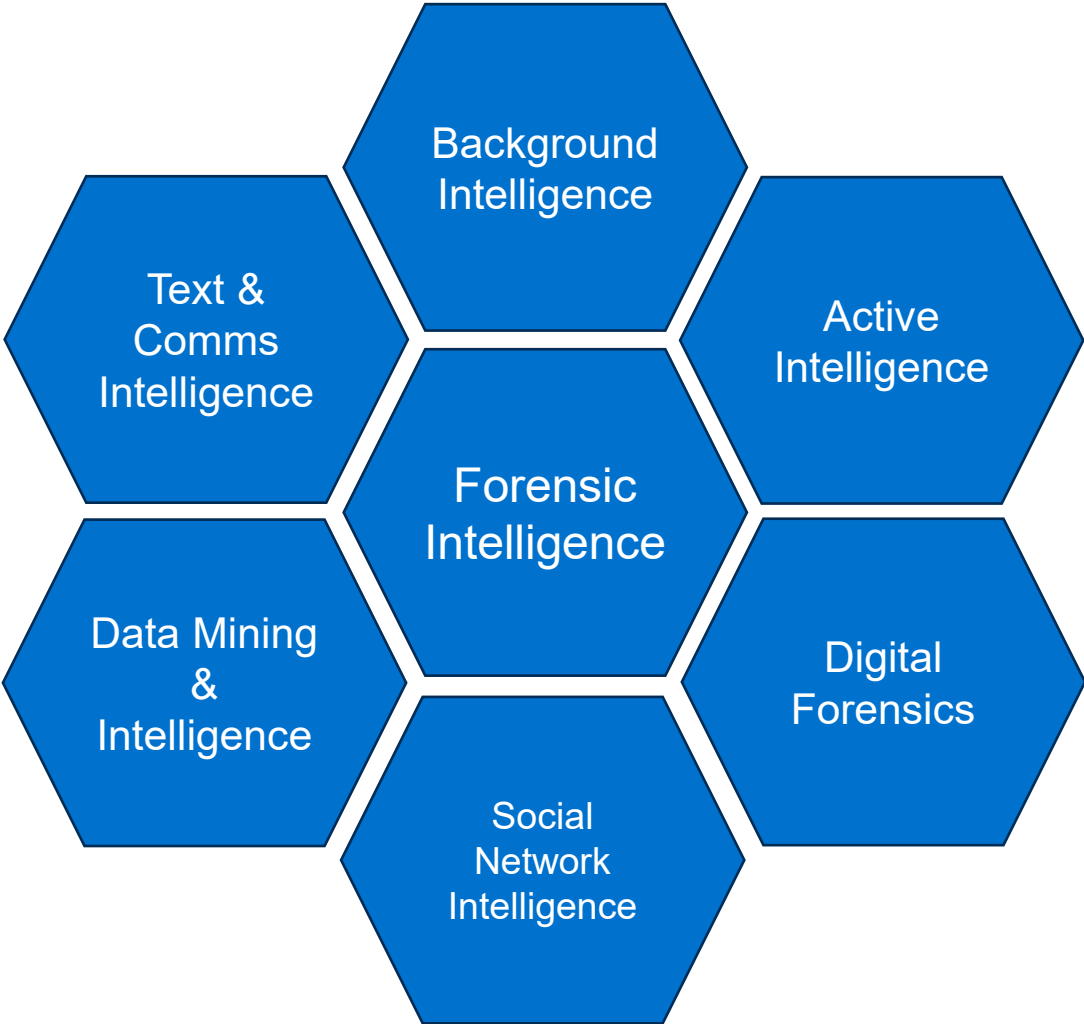
- Collection does not equal understanding
- Documents rarely provide full context
- Key relationships may remain hidden
- Intent is often difficult to infer

02

Forensic Intelligence Framework



Forensic Intelligence Framework

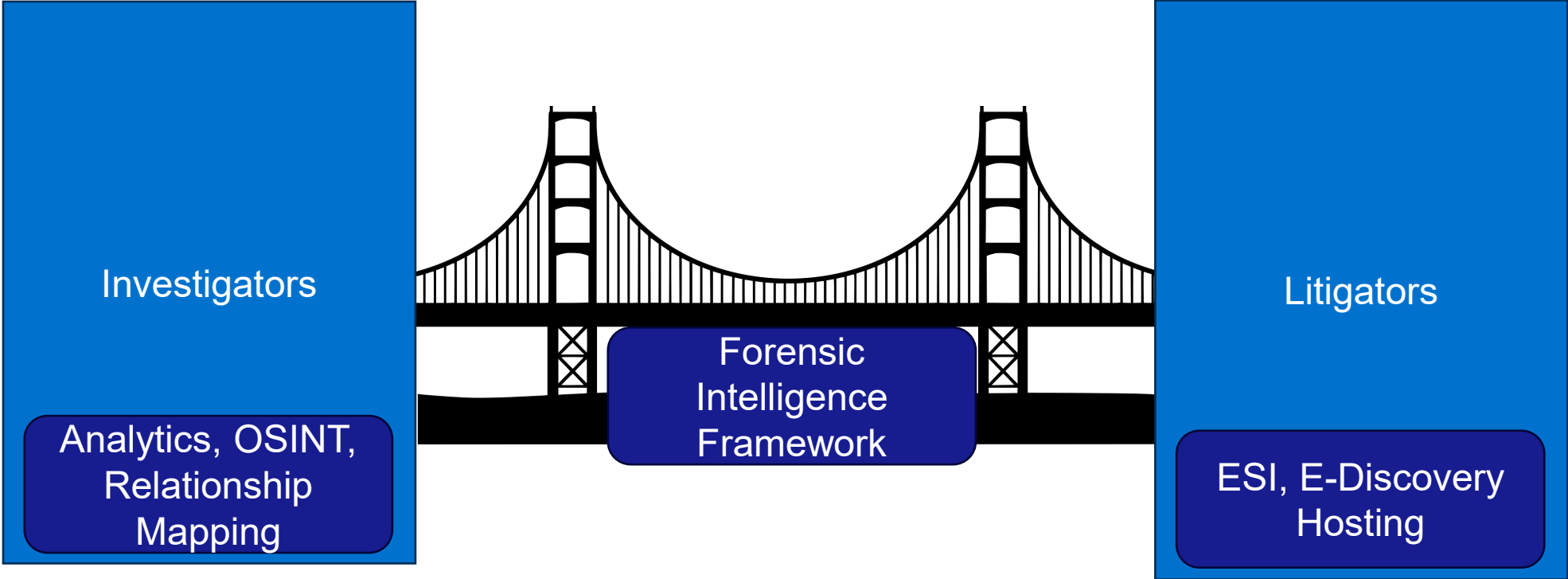


How Does E-Discovery Fit In?

E-Discovery's Role

- Enhanced by OSINT & external context
- Gain greater understanding through analytics
- AI improves efficiency, prioritization, & efficiency
- Insights feed back into the investigation
- Foundational layer for investigative data

Bridging the Gap



03

Open-Source Intelligence (OSINT)



Background Intelligence

Using Public Information to Strengthen Context



Public Information

- Uses widely available public sources
- Reverse lookup and relationship identification
- Helps establish motive and external context
- Surfaces information not controlled by the organization
- Requires human judgment and validation
- Periodic checks



Application to E-Discovery

- Adds critical context to e-discovery sources
- Corroborates e-discovery source evidence
- Reveals relationships beyond the evidence

Open-Source Data

What Public-Source Data Can Reveal

Common

- Name, Address, Phone, Email
- Occupational
- Education, Licenses, Credentials
- Social Media Footprint
- Properties & Other Assets
- Relatives & Associates
- Genealogy Information
- Business Affiliations
- Loans, Liens, Judgements
- Civil/Criminal Records
- Alias & Usernames

Less Common

- Exclusion Lists (OFAC SDN, LEIE, SAM, PEP List)
- “Leak” Data, e.g., WikiLeaks
- News & News Archives
- Auction, Classifieds, Dating
- Photographs
- IP Addresses (Shodan, Leaks, Disclosures)

Inferred & Linked Data

- Religion, Race, Ethnicity
- Political Stances/Affiliations
- Social Organization Memberships
- Ideology
- Locational Data
- Lifestyle & Tendencies

OSINT Aggregators in Action

Validating Actors, Claims, & Credibility Using Open-Source Intelligence

- **The situation:** Court-required disclosures stalled for months—then a sudden production of 100+ pages of “attorney” emails.
- **The claim:** The husband asserted he was working with counsel, then said the attorney had died—preventing further compliance.
- **Value of OSINT:** Rapidly validated the purported attorney/law firm identity and surfaced inconsistencies (name, affiliation, legitimacy).
- **The findings:** The law firm and “attorney” were not real; the “death” claim did not hold up under open-source verification.
- **Why it matters:** OSINT quickly pressure-tests credibility, flags deception early, and supports clear, defensible reporting.

Relationship Mapping

Turn Disconnected Data Into an Understandable Network



Relationship Maps

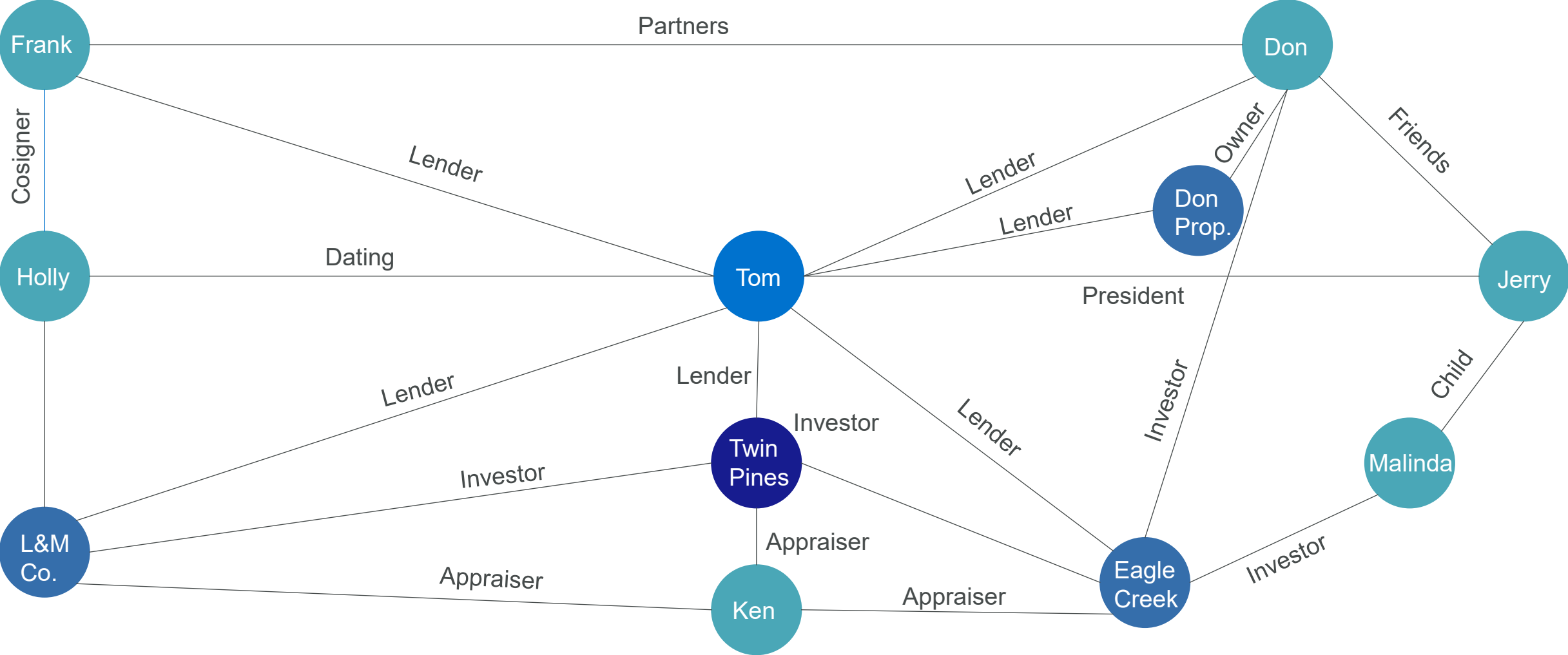
- Visualizes direct and indirect connections
- Reveals hidden relationships
- Highlights patterns and anomalies
- Uncovered information can snowball into new leads
- Useful in fraud, collusion, corruption, and conflict reviews
- Requires validation to avoid false positives



Application to E-Discovery

- Provides context beyond the face of the documents
- Links disconnected evidence into a coherent network
- Highlights relationships that may warrant deeper review
- Improves focus on the most relevant actors and issues
- Turns findings into actionable investigative leads

Relationship Mapping



Relationship Mapping



INSIGHT EXPLORE SEARCH COMMUNICATION DEVICES EVENTS IMAGES IDENTITIES INTELLA ASSIST

People

linux-kernel@vger.kernel.org
Linux Kernel, ...

linux-nfs@vger.kernel.org

manuel.spam@nurfuerspam.de
Manuel Reimer

mingo@elte.hu
Ingo Molnar

stevenaas@yahoo.com
Steven

walken@zoy.org
Michel Lespinasse

Graph options

Direct communication only

Restrict to listed participants

Max recipients 1

Show unknown senders/receivers

Filters

Add keyword filter...

<input type="checkbox"/>	Item ID	Date	From	To
<input type="checkbox"/>	[bse-nse2021]	We are 3 Year Old Today		
<input type="checkbox"/>	21,067	Dec 31, 2020 7:29:58 PM PST		a2, a2zinvest@yahoo.com, Aashish Aggarwal, abhay mohite, Abonn...
<input type="checkbox"/>	[bse-nse2021]	UML woes in 2.6.24-rc6-mm1		
<input type="checkbox"/>	19,088	Jan 2, 2021 9:53:00 AM PST	linux-kernel-owner@vger.kernel.org, Miklos Szeredi <m...	jdike@addtoit.com
<input type="checkbox"/>	21,060	Jan 2, 2021 9:53:00 AM PST		akpm@linux-foundation.org, akpm@osdl.org, Aleksandar Ristovski, Andi Kl...

Showing 50 of 203 items

from [] to []

Intella-Based Relationship Mapping

OSINT Resources



Free & Low-Cost Tools

- Aggregators
 - FamilyTreeNow.com
 - ClustrMaps.com
 - PeopleSearchNow
 - TruthFinder.com
- IntelTechniques is a great aggregation of lots of sources
- NodeXL for relationship mapping

Commercial Tools

- Aggregators
 - LexisNexis
 - Westlaw
 - DDIQ
 - Thomson Reuters CLEAR

How AI Enhances OSINT



Where AI Adds Value

- Accelerates public-source research and synthesis
- Expands coverage while reducing manual review time
- Helps identify links, entities, and patterns across sources
- Requires validation to manage hallucinations and inaccuracies

AI Tools

- Copilot
- Claude
- Gemini
- ChatGPT
- Perplexity
- NotebookLM

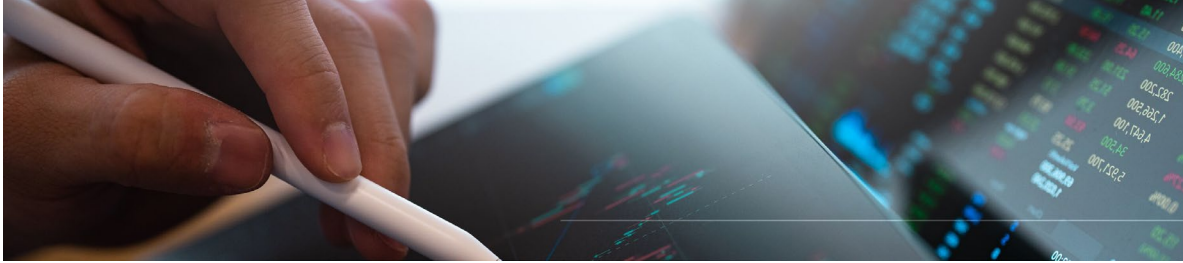
04

Data Analytics



Analytics

Shifting From Volume-Based Reviews to Relevancy Reviews



Benefits of External Analytics

- Creates normalized datasets for deeper analysis
- Extends insight beyond native review tools
- Supports continuous, iterative investigation
- Improves focus and lowers downstream review costs



Built-In E-Discovery Features

- Advanced search and filtering
- Email threading
- Near-duplicate detection
- Timeline analysis
- Built-in relationship mapping

Breach Impact Assessment

Identifying Exposed Data & Affected Clients Following a Security Incident

E-Discovery Approach

Collected & consolidated leaked data from external sources

Determined what information was exposed utilizing advanced keyword searching

Mapped exposed data to affected clients & data subjects

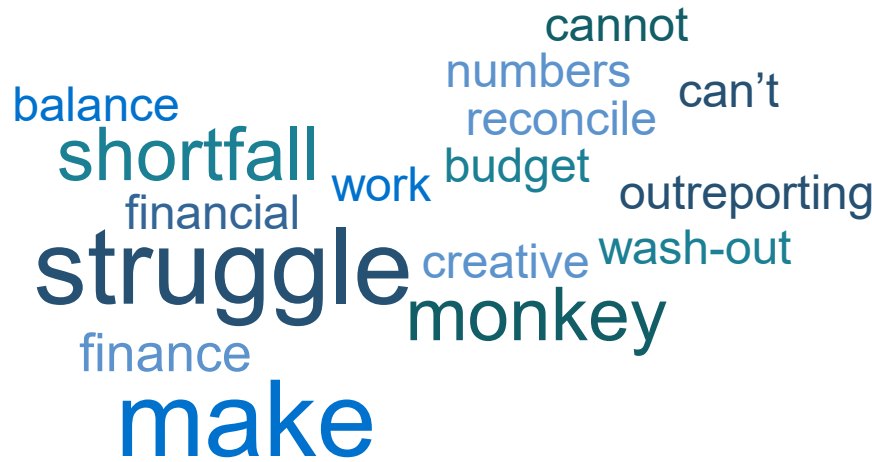
Quantified impact to support notification & regulatory response

Technology-Assisted Review (TAR) Predictive Coding

Why It Matters

- Uses machine learning, not generative AI
- Learns from reviewer decisions to predict relevance
- Works well for large datasets & recurring patterns
- Can significantly reduce review time & cost
- Defensible when properly designed & validated

Topic Mapping & Emotion Detection



Data Mining



Identify Patterns, Trends, & Anomalies

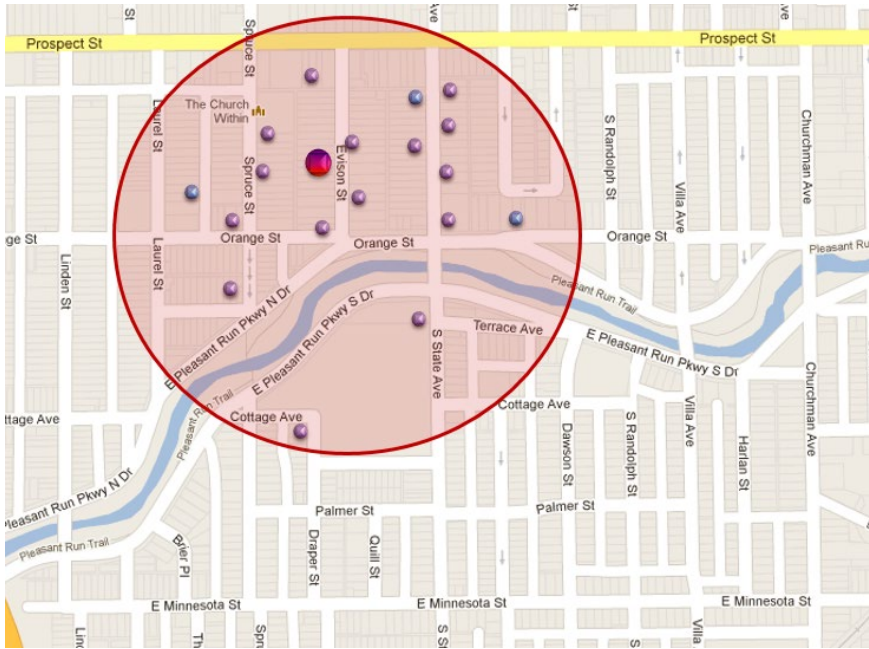
- Detects recurring patterns and fraud indicators
- Analyzes large datasets at scale
- Highlights anomalies, outliers, and risk signals
- About 90% of all frauds we've seen in the last 30 years were not new, but rather the same schemes with the same fingerprints.
- Data mining looks directly for those fingerprints.



Application to E-Discovery

- Improves prioritization
- Finds insights beyond keyword searching
- Supports extraction of structured data for deeper analysis

Data Mining Examples



Customer	Address	Phone
P&Q Distributing, Inc.	PO Box 247, Hannibal, MO	660-555-1200
P&Q Distributing, Inc.	PO Box 247, Hannibal, MO	660-555-1200
P&Q Builders, Inc.	PO Box 145, Hannibal, MO	660-396-1889
P&Q Builders, Inc.	PO Box 145, Hannibal, MO	660-396-1889
P&Q Builders, Inc.	PO Box 145, Hannibal, MO	660-396-1889
Terry (President, CEO)	PO Box 145, Hannibal, MO	660-396-1889
Terry (President, CEO)	PO Box 145, Hannibal, MO	660-396-1889

200.00	WAL-MART #1985
500.00	WAL-MART #1985
400.00	WAL-MART #1985
100.00	WAL-MART
300.00	WAL-MART
100.00	WAL-MART

58.26	APL*ITUNES
2.11	APL*ITUNES
3.17	APL*ITUNES
32.80	APL*ITUNES
1.05	APL*ITUNES
21.18	APL*ITUNES



Built-In AI Productivity Tools

Intella Assist

Magnet AI

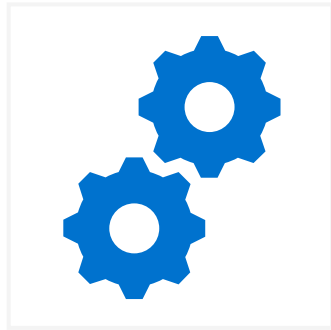
Standard GenAI Tools



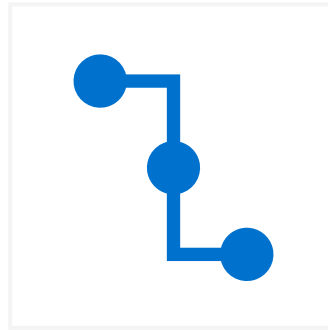
Next Steps

Apply These Practices on Your Next Matter

Collect smarter. Add context. Find what matters faster.



Start with e-discovery early to centralize data, cut through the noise, and focus review on what matters most.



Go beyond the documents by layering in OSINT and relationship mapping to add context, validate narratives, and surface hidden connections.



Use analytics and data mining to prioritize risk, detect patterns, and turn large data sets into clear, defensible investigative action.

Contact

Forvis Mazars

Lanny Morrow

Forensic Intelligence Services | Senior Manager

P: 816.284.1080

lanny.morrow@us.forvismazars.com

Sean Leonard

Forensic Intelligence Services | Manager

P: 843.727.3245

sean.leonard@us.forvismazars.com



The information set forth in this presentation contains the analysis and conclusions of the author(s) based upon his/her/their research and analysis of industry information and legal authorities. Such analysis and conclusions should not be deemed opinions or conclusions by Forvis Mazars or the author(s) as to any individual situation as situations are fact-specific. The reader should perform their own analysis and form their own conclusions regarding any specific situation. Further, the author(s)' conclusions may be revised without notice with or without changes in industry information and legal authorities.

© 2026 Forvis Mazars, LLP. All rights reserved.