



## **Preserve Your Data Legacy With Solver's Data Warehouse**

November 2025











**forv/s**  
**mazars**

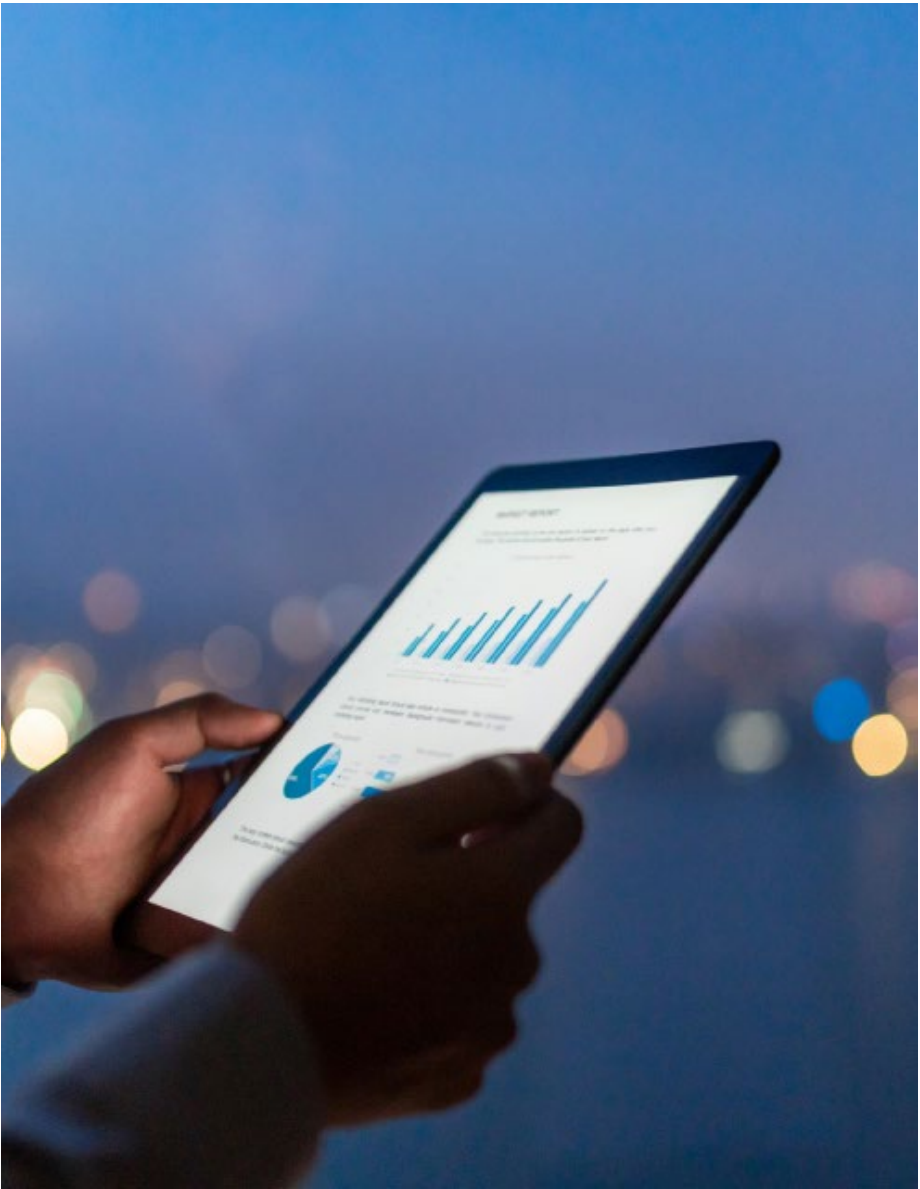
# Business Technology Services

**We solve for business challenges & support innovation through technology solutions.**

Our toolbox is equipped with leading enterprise resource planning (ERP), customer relationship management (CRM), artificial intelligence (AI), automation, & business intelligence (BI) tools.

Our end-to-end technology solutions & managed services help clients achieve their digital transformation goals. Services include:

- |  |                                      |   |  |
|--|--------------------------------------|---|--|
|    | Solution Assessment & Selection      |    | Implementation Project Rescues         |
|    | System Implementation & Integration  |    | Business Intelligence (BI) & Analytics |
|    | Process & Technology Design          |    | Robotic Process Automation (RPA)       |
|  | Upgrades, Enhancements, & Automation |  | Custom Application Development         |
|  | Training, Monitoring, & Support      |  | IT & Cybersecurity Managed Services    |



# Business Technology Services For Middle Market & Global Organizations



## System Integration

### ERP

- Microsoft Dynamics 365 Finance, Supply Chain Management, Project Operations, Commerce, Business Central (GP, NAV, AX)
- Oracle NetSuite
- Sage Intacct, Sage 100, Sage 500, Sage Fixed Assets
- Trimble Construction One, Viewpoint, Spectrum, Vista

### Intelligence & Automation

- Microsoft Copilot Studio
- Microsoft Power Platform
- Microsoft Azure
- Workato
- Artificial Intelligence (AI)
- Robotic Process Automation (RPA)
- Custom Application Development
- Business Intelligence (BI)
- Solver Extended Financial Planning & Analysis (xFP&A)

### CRM

- Microsoft Dynamics 365 Sales, Customer Insights, Customer Service, Field Service
- Marketing Automation



## Managed Services

### Cybersecurity

- 24/7/365 Security Operations Center (SOC)
- Managed Detection & Response (MDR)
- Managed Security Information & Event Management (SIEM)
- Vulnerability Management
- Managed Brand Protection
- Managed Incident Response
- Virtual CISO (vCISO) Advisory
- Partnerships With SentinelOne, Elastic, Qualys, & More

### IT Operations

- Virtual Chief Information Officer (CIO)
- Network Operations Center (NOC)
- Cloud Infrastructure (Azure & AWS)
- Managed Server & Desktop
- Managed Backup & Recovery
- Procurement

### Business Applications

- Microsoft Dynamics ERP & CRM
- Microsoft Power Platform
- Microsoft 365
- Oracle NetSuite
- Sage & Sage Intacct
- ISV Add-On Management
- Release & Upgrades Management
- Automated Testing Setup & Support
- End-User Training

# Today's Presenter



## **Charles Allen**

Senior Managing Consultant

[charles.allen@us.forvismazars.com](mailto:charles.allen@us.forvismazars.com)



# Objectives

1. List key steps for migrating & merging legacy data with Solver's Data Warehouse
2. Explain how to use Solver's modules & ad hoc tools to report on unified data
3. Outline common data migration issues for accurate reporting



# Agenda

1. Solver Introduction
2. Data Warehouse
3. Strategies for Legacy Data



# 02

## Data Warehouse



# What Is Solver?

A suite of extended financial planning & analysis tools

- xFP&A solution
- Cloud-based
- Reporting, planning, data warehouse
- Integration with Power BI & Tableau





# About Solver

- Founded in 1996
- Headquartered in California, with 15 offices globally
- One of the first CPM solutions to offer a web portal globally
- Specialize in multiple verticals, including SaaS, Nonprofits, Hospitality, & Healthcare
- Experienced team with deep knowledge on CPM & Business Intelligence
- Recognized as a G2 Leader in Corporate Performance Management
- SOC 2 & HIPAA Certified/Compliant
- Partnered with top global software publishers & business consulting firms





# solver



**EVERY USER  
RECEIVES**

**SOLVER SUITE**

**AZURE CLOUD**

Security  
Scalability

**eLEARNING**

On-demand  
Certifications

**DATA  
WAREHOUSE**

Pre-built  
Configurable  
Connectors

**REPORTING**

Financial & Operational  
Consolidations  
Dashboards

**PLANNING**

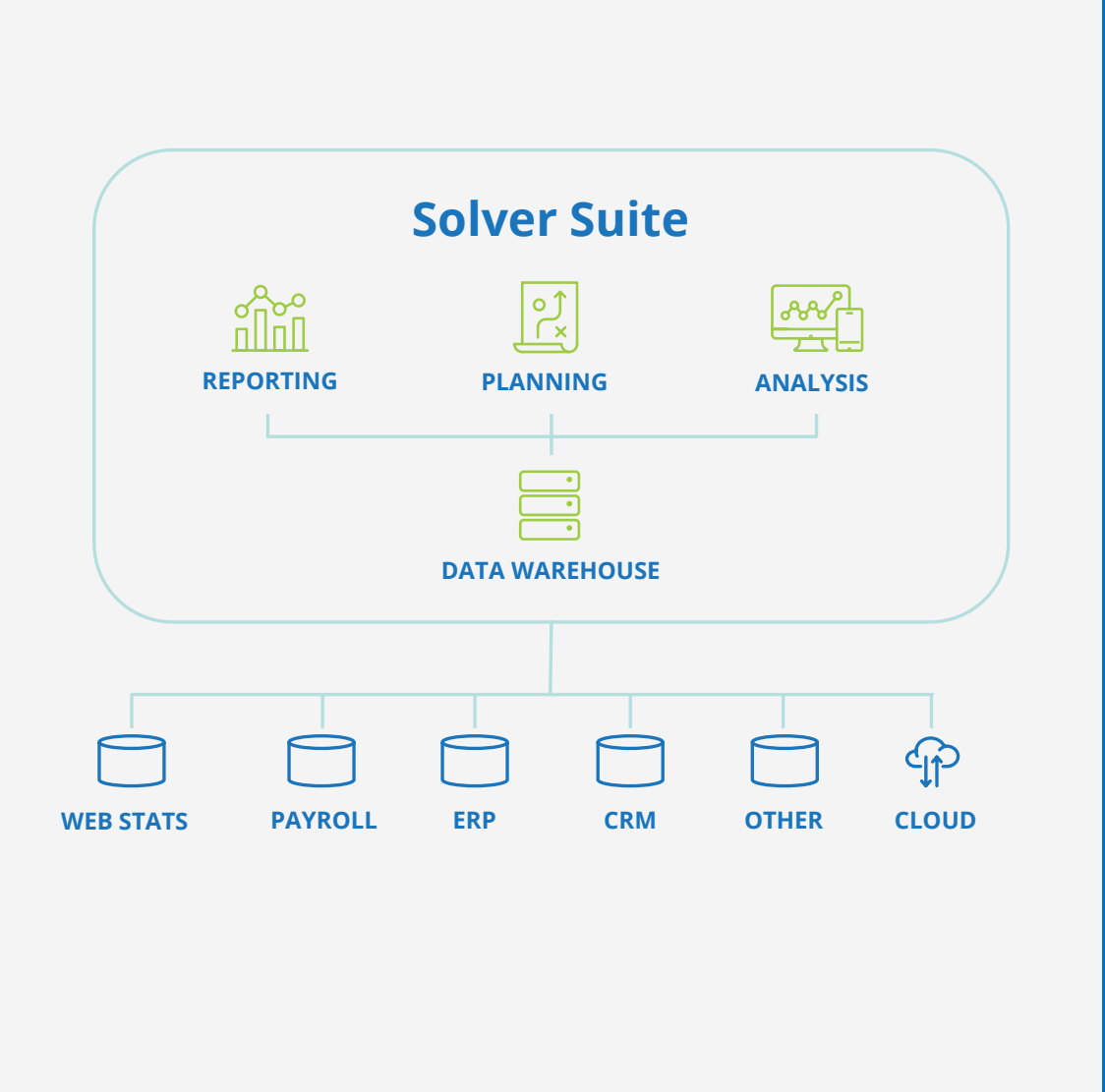
Budgeting  
Forecasting  
What If Analysis

**MARKETPLACE**

100+  
Ready-to-use  
Templates

# 02

## Data Warehouse



# What Is a Data Warehouse?

Stores structured data from multiple sources in one place

Designed for reporting, planning, & decision making

Scalable, flexible, & cost effective

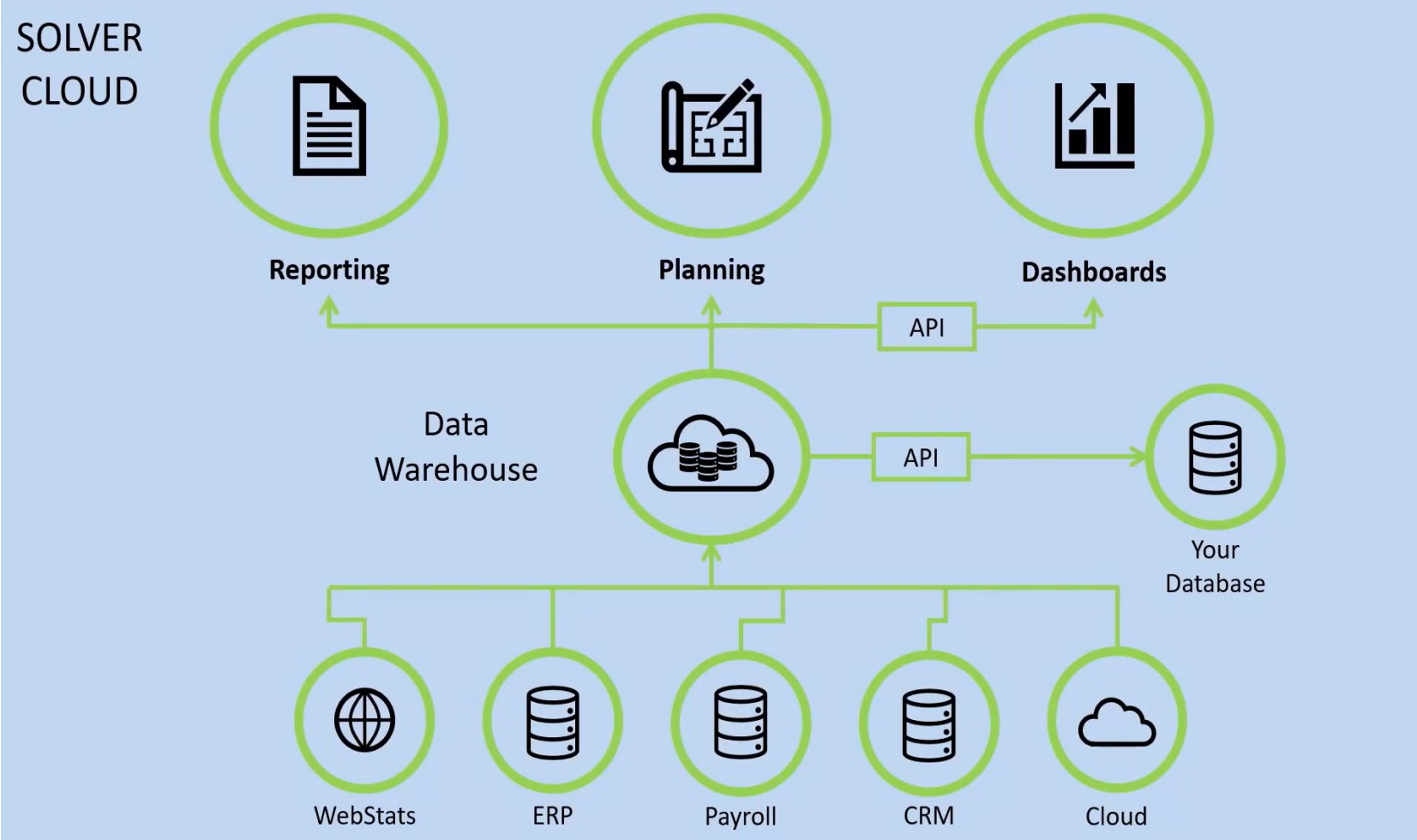
Different types of data warehouses

Enterprise data warehouses support large-scale analytics across departments & locations

Ensures data is cleaned, consistent, & ready for analysis

AI & cloud technologies

# The Solver Data Warehouse





# Elements of the Solver Data Warehouse

Modules – store the activity you want to measure

Dimensions – store master or setup tables

Integrations – imports the data

Rules – clean & update data

Jobs – automate integrations

# Modules

## Used to Store Activity to Be Measured

OVERVIEW Dimensions by Module					
Modules		Dimensions			
ACCOUNTS PAYABLE		ACCOUNTS RECEIVABLE		ACQUIRED COMPANY HISTORY	
Account Category Currency Department Entity Period Scenario Vendor		Account Category Currency Customer Department Entity Period Scenario		Acquired Comp... Category Entity Period Scenario Source System	
Last updated	Size	Last updated	Size	Last updated	Size
–	664.00 KB	–	536.00 KB	3 months ago	216.00 KB
BC GL DETAIL		BENCHMARKING		CAPITAL	
BC Accounts BC Department Category Currency Entity Period Scenario Source System		Benchmark Orgs Entity Period Scenario		Account Asset Category Currency Department Entity Period Scenario Source System	
Last updated	Size	Last updated	Size	Last updated	Size
7 months ago	4.77 MB	–	216.00 KB	–	216.00 KB
DECISION ADVISOR		GENERAL LEDGER		GENERAL LEDGER DETAIL	
Category Currency Entity Line Details Period Scenario		Account Category Corresponding ... Currency Department Entity Interco Parent Line Details Minority Parent Period		Account Category Corresponding ... Currency Department Entity Line Details Period Scenario Source System	
Last updated	Size	Last updated	Size	Last updated	Size
–	216.00 KB	3 years ago	153.23 MB	3 months ago	1.77 MB
GOOGLE ANALYTICS		GP GENERAL LEDGER DETAIL		GP GENERAL LEDGER SUMMARY	
Category Entity Period Scenario		Category Currency Entity GP Account GP Account Stri... GP Department GP Division Line Details Period Scenario		Category Currency Entity GP Account GP Account Stri... GP Department GP Division Line Details Period Scenario	
Last updated	Size	Last updated	Size	Last updated	Size
–	1.90 MB	4 years ago	20.40 MB	2 years ago	920.00 KB

# Dimensions

## Used as Lookup or Master Records

<div>CUSTOMER</div> <div>Accounts Recei... Revenues Sales</div> <div><div>Last updated a year ago</div><div>Size 336.00 KB</div></div>	<div>DEPARTMENT</div> <div>Accounts Paya... Accounts Recei... Capital General Ledger General Ledger... Inventory Payroll Revenues Travel</div> <div><div>Last updated 4 years ago</div><div>Size 144.00 KB</div></div>	<div>EMPLOYEE</div> <div>Payroll Revenues Strategy Travel</div> <div><div>Last updated 2 years ago</div><div>Size 208.00 KB</div></div>	<div>GP ACCOUNT</div> <div>GP General Led... GP General Led... GP Payroll Deta...</div> <div><div>Last updated 2 years ago</div><div>Size 336.00 KB</div></div>	<div>GP ACCOUNT STRING</div> <div>GP General Led... GP General Led... GP Payroll Deta...</div> <div><div>Last updated 2 years ago</div><div>Size 464.00 KB</div></div>	<div>GP DEPARTMENT</div> <div>GP General Led... GP General Led... GP Payroll Deta...</div> <div><div>Last updated 2 years ago</div><div>Size 336.00 KB</div></div>
<div>GP DIVISION</div> <div>GP General Led... GP General Led... GP Payroll Deta...</div> <div><div>Last updated 2 years ago</div><div>Size 144.00 KB</div></div>	<div>GP EMPLOYEES</div> <div>GP Payroll Deta...</div> <div><div>Last updated 4 years ago</div><div>Size 272.00 KB</div></div>	<div>GP PAYROLL CODES</div> <div>GP Payroll Deta...</div> <div><div>Last updated 4 years ago</div><div>Size 144.00 KB</div></div>	<div>GP PAYROLL DEPT</div> <div>GP Payroll Deta...</div> <div><div>Last updated 4 years ago</div><div>Size 144.00 KB</div></div>	<div>GP PAYROLL JOBTITLE</div> <div>GP Payroll Deta...</div> <div><div>Last updated 4 years ago</div><div>Size 144.00 KB</div></div>	<div>GP VENDOR</div> <div>GP Payables</div> <div><div>Last updated 2 years ago</div><div>Size 208.00 KB</div></div>

# Rules

## Used for Working With Data

RULES Transformations of Data

ADD NEW

→|IMPORT

▶

✎

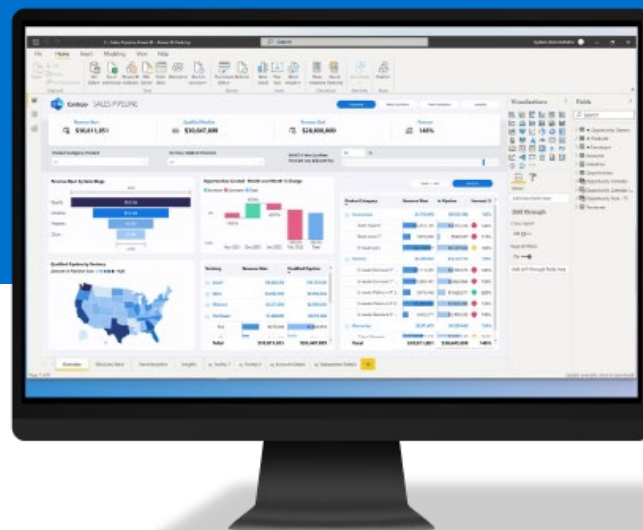
↔

🗑

Name	Module	Status	Last Run ▼	Created By	Created On	Modified By	Last Modified
GenerateGLSummaryData	General Ledger	● SUCCESS	08/13/2025 04:12 PM	Charles Allen	07/19/2025 05:19 PM	Charles Allen	07/19/2025 05:30 PM
Transfer Acquired Company Data to ...	General Ledger	● SUCCESS	08/13/2025 04:09 PM	Charles Allen	07/19/2025 03:50 PM	Charles Allen	08/12/2025 07:20 PM
DeleteDuplicateEntryNumberRecords	BC GL Detail	● SUCCESS	07/30/2024 05:05 PM	Charles Allen	07/30/2024 02:20 PM	Charles Allen	07/30/2024 04:54 PM
DeleteDatainModule	General Ledger	● SUCCESS	07/30/2024 12:23 PM	Charles Allen	05/17/2020 07:37 PM	Charles Allen	05/17/2020 07:37 PM
CreateSalesPersonCustomerDimensi...	Revenues	● SUCCESS	07/27/2024 02:44 PM	Charles Allen	07/27/2024 02:44 PM	Charles Allen	07/27/2024 02:44 PM
DeleteDataWithEntity	General Ledger	● SUCCESS	10/26/2023 10:39 AM	Charles Allen	01/12/2023 10:23 AM	Charles Allen	01/12/2023 10:23 AM
DeleteNonCorpDemoData	General Ledger	● SUCCESS	02/13/2023 11:29 PM	Charles Allen	02/13/2023 11:29 PM	Charles Allen	02/13/2023 11:29 PM
DeleteLargeGLData	General Ledger	● SUCCESS	11/15/2022 11:06 PM	Charles Allen	11/15/2022 11:03 PM	Charles Allen	11/15/2022 11:03 PM
DeleteNonDepartment	General Ledger	● SUCCESS	04/07/2022 10:39 PM	Charles Allen	04/07/2022 10:39 PM	Charles Allen	04/07/2022 10:39 PM
CopyVersionsByPeriod	General Ledger	● SUCCESS	10/28/2021 10:29 AM	Charles Allen	10/28/2021 10:28 AM	Charles Allen	10/28/2021 10:28 AM
CopyVersions_Period	General Ledger	● SUCCESS	10/25/2021 10:47 AM	Charles Allen	10/25/2021 10:45 AM	Charles Allen	10/25/2021 10:45 AM
Calc_OBA_D365	General Ledger	● SUCCESS	03/09/2021 02:32 AM	Charles Allen	03/09/2021 02:31 AM	Charles Allen	03/09/2021 02:31 AM

# Demo

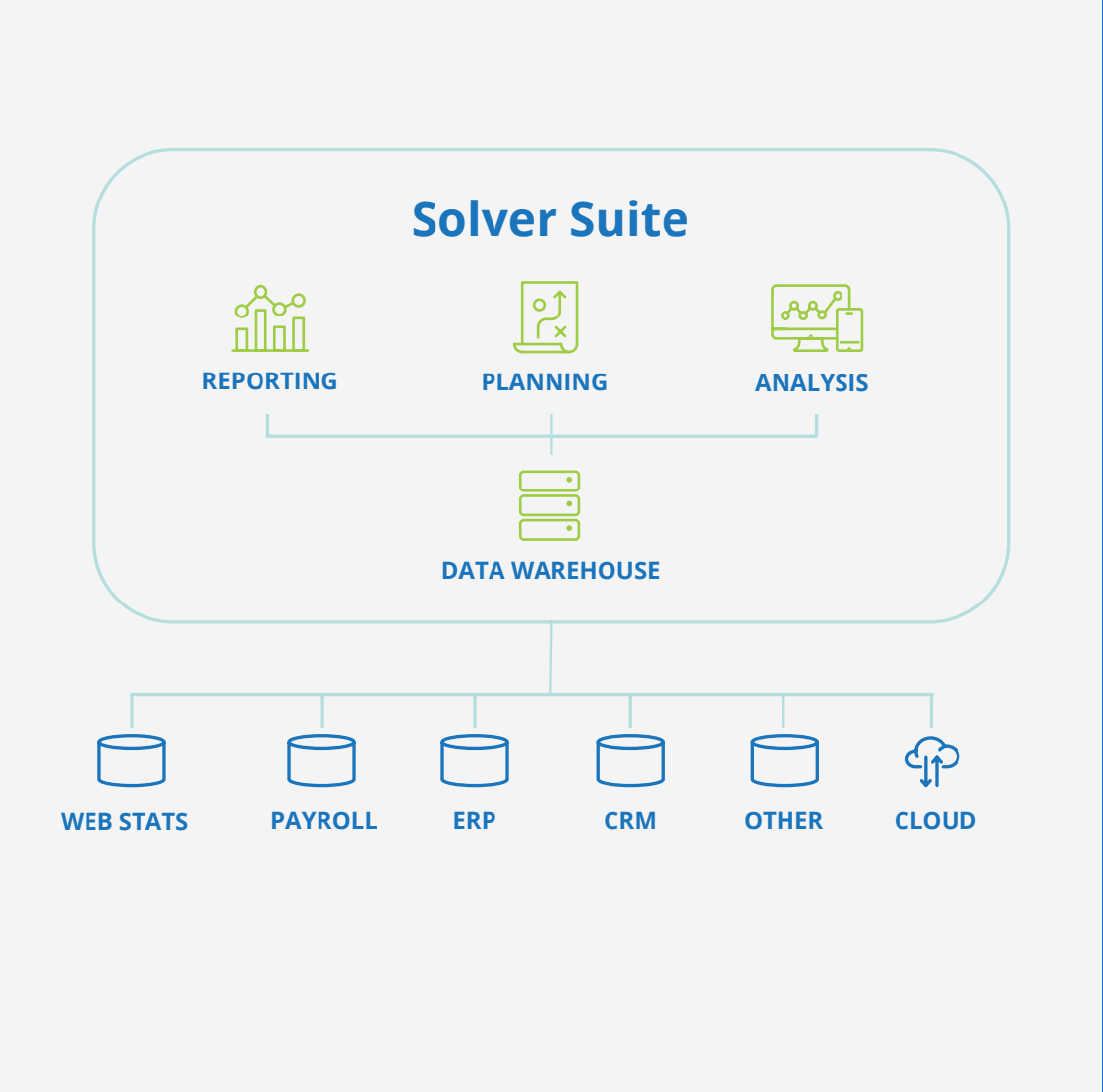
Microsoft  
Partner





# 03

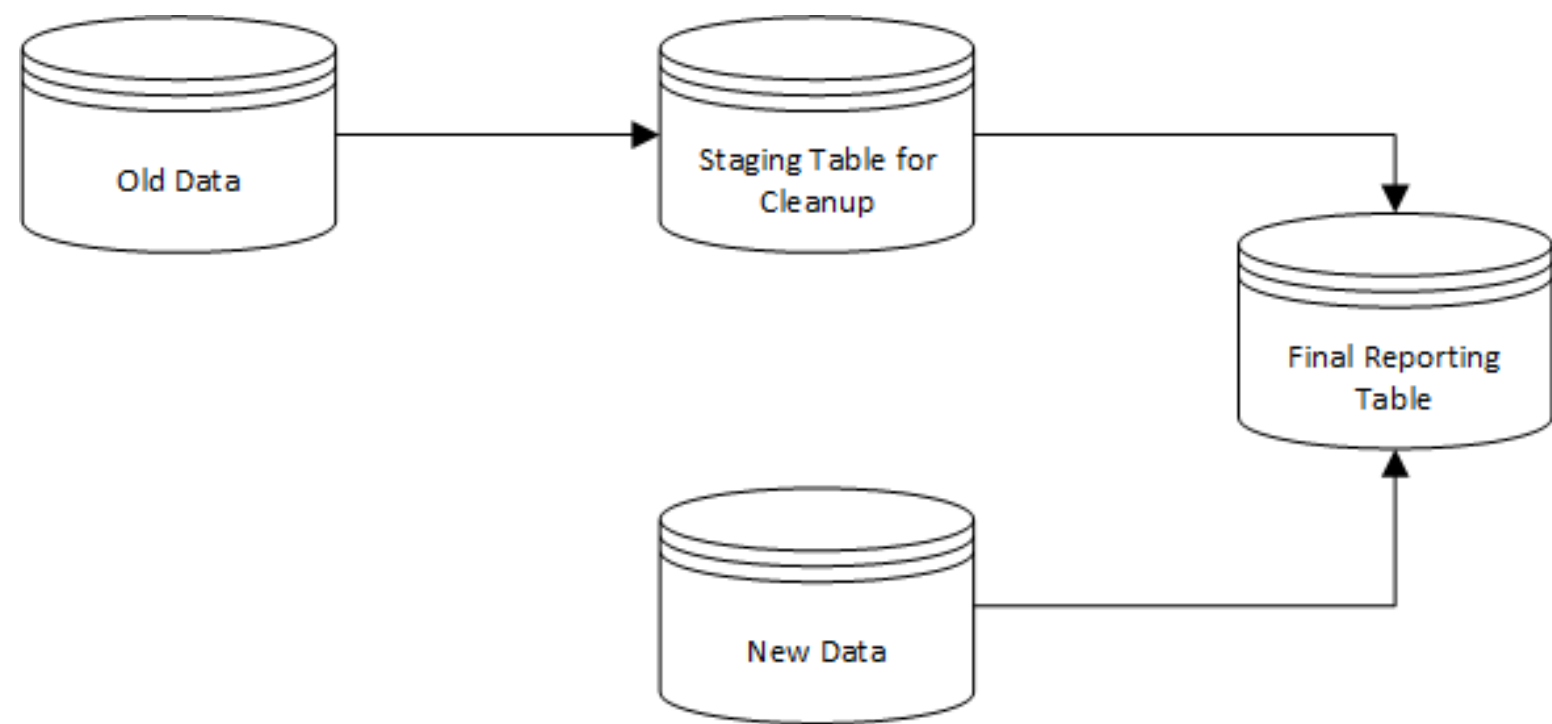
## Managing Legacy Data



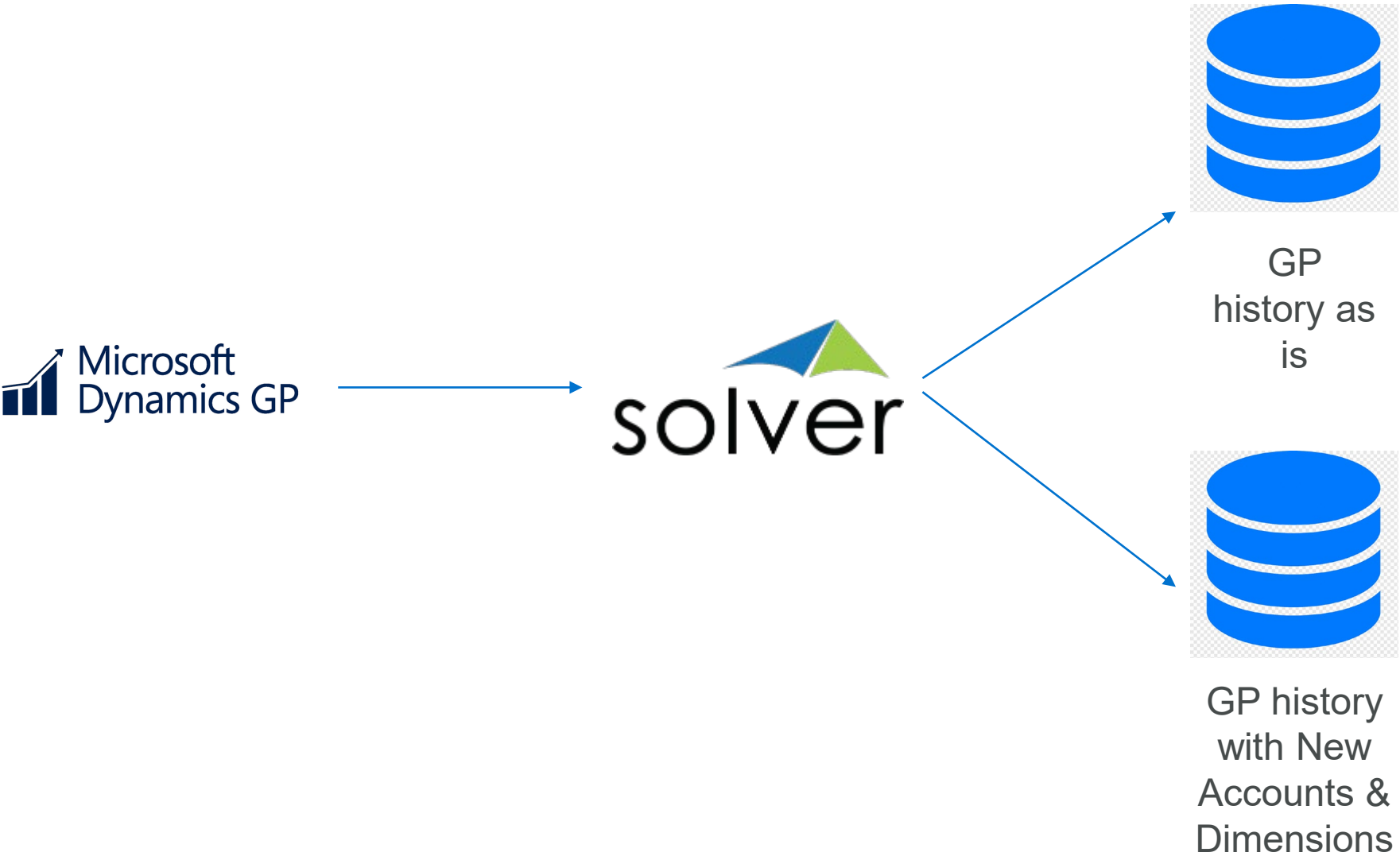
# Considerations

- Column name differences
- Column purpose differences
- Data differences
- Inconsistent columns
- Duplicate data
- Identifying old & new

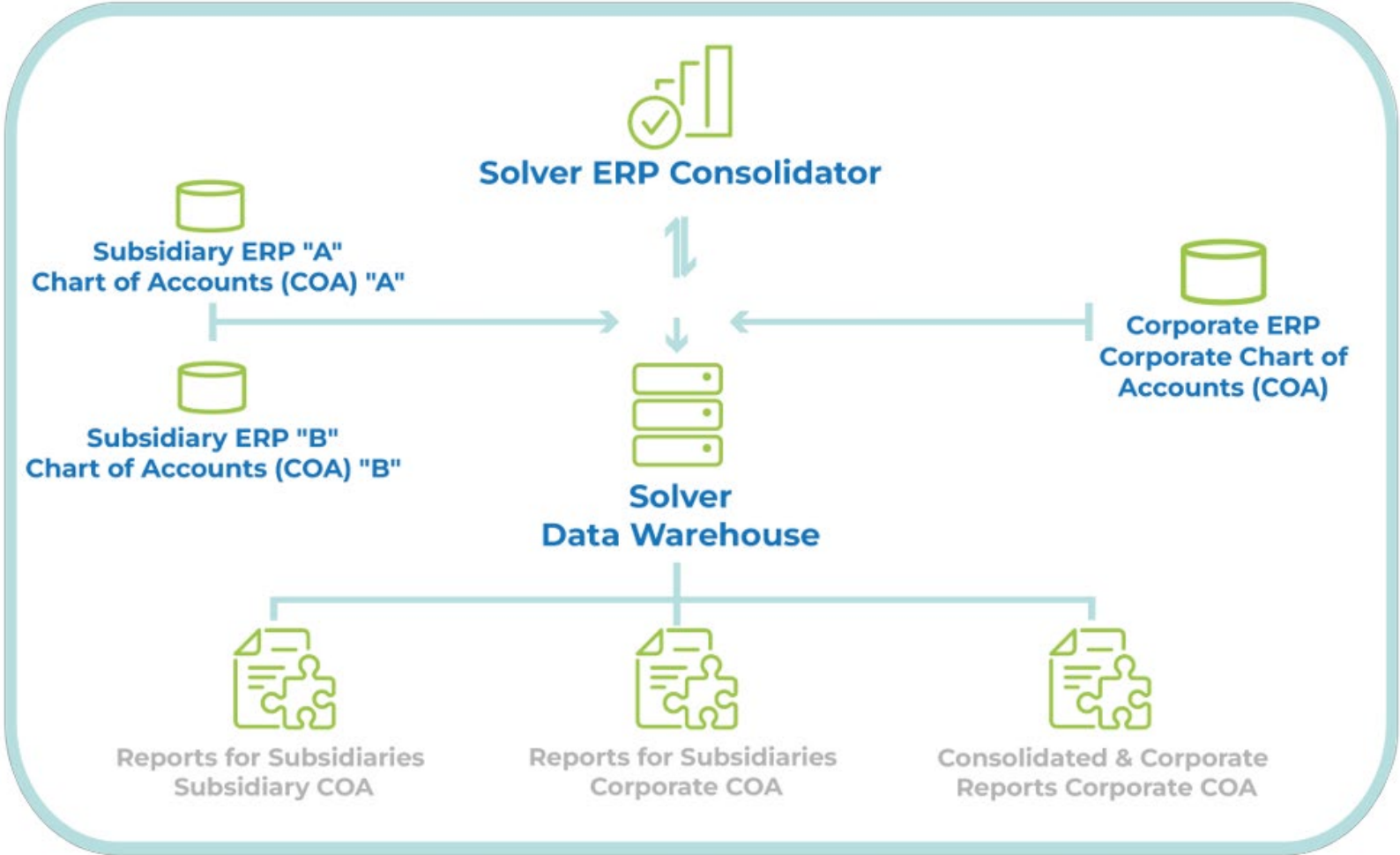
# Merging the Data Process



# Solver Migration Mapper



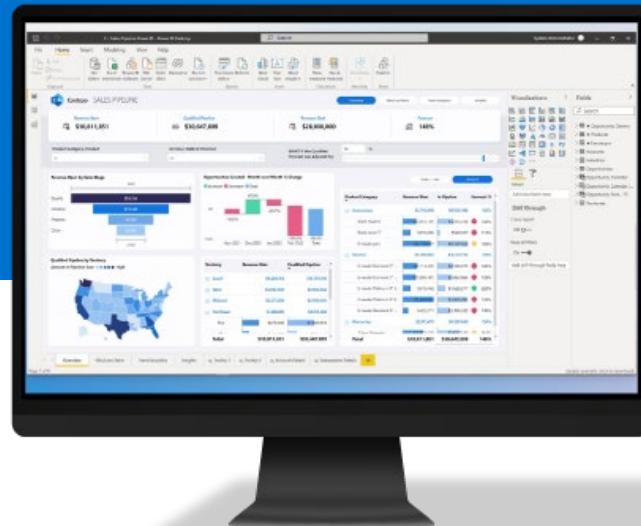
# ERP Migration Mapper





# Demo

Microsoft  
Partner



# Q&A



Business  
Technology  
Services

## Questions?

# Contact

## Forvis Mazars



### Charles Allen

Senior Managing Consultant

[charles.allen@us.forvismazars.com](mailto:charles.allen@us.forvismazars.com)

The information set forth in this presentation contains the analysis and conclusions of the author(s) based upon his/her/their research and analysis of industry information and legal authorities. Such analysis and conclusions should not be deemed opinions or conclusions by Forvis Mazars or the author(s) as to any individual situation as situations are fact-specific. The reader should perform their own analysis and form their own conclusions regarding any specific situation. Further, the author(s)' conclusions may be revised without notice with or without changes in industry information and legal authorities.

© 2025 Forvis Mazars, LLP. All rights reserved.