



Streamlining Reporting & Planning for Dynamics Finance With Solver

October 24, 2024

Global Presence

Top 10

Global Network*

\$5bn

Combined Revenue (2023)

100+

Combined Countries & Territories

400+

Combined Offices & Locations

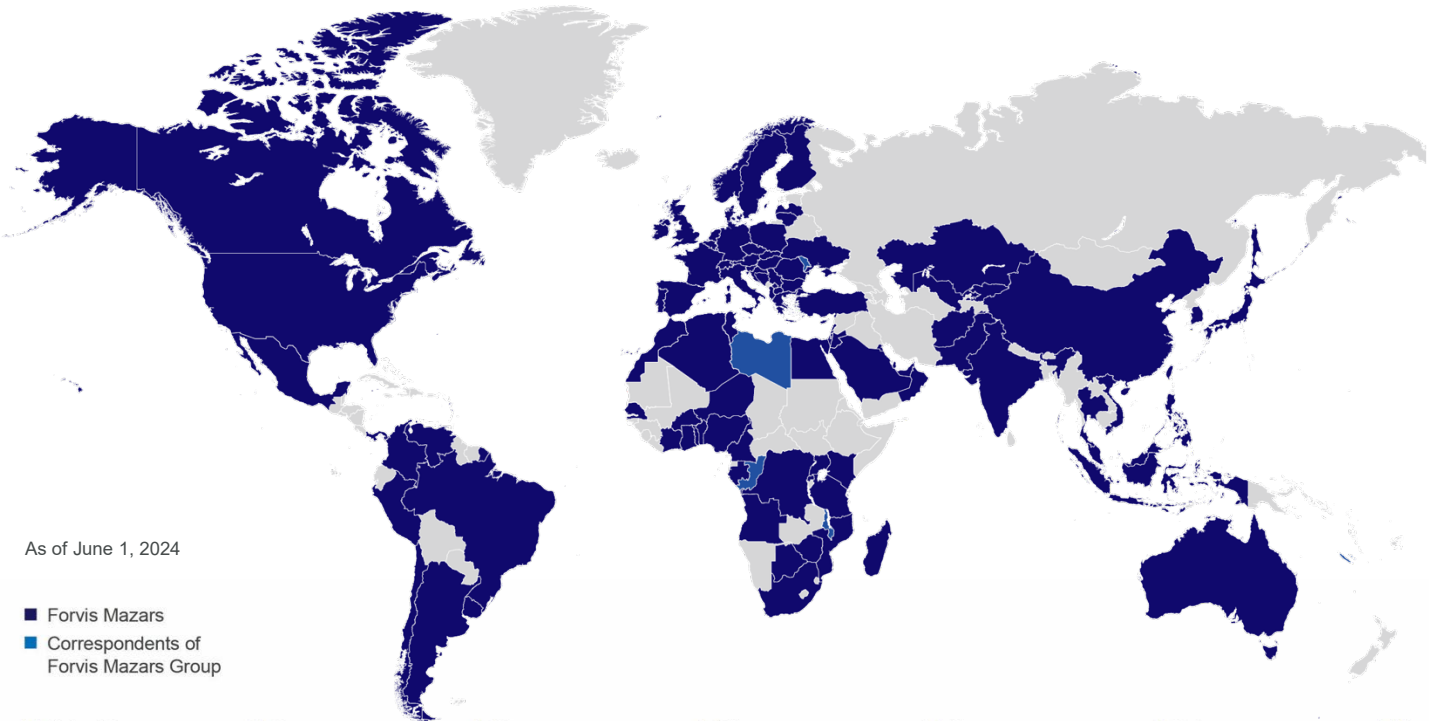
1,800+

Combined Partners

40,000+

Combined Employees

* Source: IAB World Network rankings, based on most recent rankings
2023 revenues: FORVIS \$1.7bn (€1.6bn), Mazars (expected) \$3bn (€2.8bn)
Forvis Mazars is the brand name for the Forvis Mazars Global network (Forvis Mazars Global Limited) and its two independent members: Forvis Mazars, LLP in the United States and Forvis Mazars Group SC, an internationally integrated partnership operating in over 100 countries and territories.



As of June 1, 2024

■ Forvis Mazars
■ Correspondents of Forvis Mazars Group

- | | | | | | | |
|--------------------------|--|--------------|--------------|-------------------|----------------|------------------------|
| ■ Afghanistan | ■ Cameroon | ■ France | ■ Korea | ■ Morocco | ■ Qatar | ■ Togo |
| ■ Albania | ■ Canada | ■ Gabon | ■ Kosovo | ■ Mozambique | ■ Romania | ■ Tunisia |
| ■ Algeria | ■ Cayman Islands | ■ Germany | ■ Kuwait | ■ Netherlands | ■ Rwanda | ■ Türkiye |
| ■ Angola | ■ Chile | ■ Ghana | ■ Kyrgyzstan | ■ New Caledonia | ■ Saudi Arabia | ■ Uganda |
| ■ Argentina | ■ China | ■ Greece | ■ Latvia | ■ Niger | ■ Senegal | ■ Ukraine |
| ■ Australia | ■ Colombia | ■ Hong Kong | ■ Lebanon | ■ Nigeria | ■ Serbia | ■ United Arab Emirates |
| ■ Austria | ■ Congo | ■ Hungary | ■ Libya | ■ North Macedonia | ■ Singapore | ■ United Kingdom |
| ■ Bahrain | ■ Côte d'Ivoire | ■ India | ■ Lithuania | ■ Norway | ■ Slovakia | ■ United States |
| ■ Belgium | ■ Croatia | ■ Indonesia | ■ Luxembourg | ■ Oman | ■ Slovenia | ■ Uruguay |
| ■ Benin | ■ Cyprus | ■ Ireland | ■ Madagascar | ■ Pakistan | ■ South Africa | ■ Uzbekistan |
| ■ Bermuda | ■ Czech Republic | ■ Israel | ■ Malawi | ■ Palestine | ■ Spain | ■ Venezuela |
| ■ Bosnia and Herzegovina | ■ Democratic Republic of the Congo (DRC) | ■ Italy | ■ Malaysia | ■ Panama | ■ Sweden | ■ Vietnam |
| ■ Botswana | ■ Denmark | ■ Japan | ■ Malta | ■ Peru | ■ Switzerland | ■ Zimbabwe |
| ■ Brazil | ■ Egypt | ■ Jordan | ■ Mauritius | ■ Philippines | ■ Taiwan | |
| ■ Bulgaria | ■ Finland | ■ Kazakhstan | ■ Mexico | ■ Poland | ■ Tanzania | |
| ■ Burkina Faso | | ■ Kenya | ■ Moldova | ■ Portugal | ■ Thailand | |

Business Technology Services


Forvis Mazars provides enterprise resource planning (ERP) & customer relationship management (CRM) platform analysis, design, implementation, upgrade, training, & support services.

Our end-to-end solutions help clients achieve their digital transformation goals by:

- Creating effective processes & strategies for future operations
- Designing & implementing modern operational systems
- Reviewing new business-facing technologies
- Leveraging existing investments in legacy technologies
- Integrating data solutions



Business Technology Services

 **ERP**

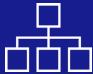
Microsoft Dynamics 365

Finance	Supply Chain
Commerce	Project Operations
Business Central	Dynamics GP

NetSuite

Sage & Sage Intacct

Trimble Viewpoint Spectrum & Vista

 **CRM**

Microsoft Dynamics 365

Sales	Customer Service
Customer Insights	Field Service

Salesforce

Marketing Automation

 **Advanced Technology**

Insights

Microsoft Power BI

Solver Planning & Analysis

Automation

Microsoft Power Platform

Robotic Process Automation (RPA)

App Development

 **Managed Services** for business applications, IT, & cybersecurity support.

Microsoft Partner

ORACLE NETSUITE
Solution Provider

Sage Partner

salesforce PARTNER

solver

forvis
mazars

Today's Presenters

Business Technology Services Practice

“Our team is focused on delivering an Unmatched Client Experience[®] on every engagement.”

– Chad Back, Partner



Charles Allen

Senior Managing Consultant

charles.allen@us.forvismazars.com



Streamlining Reporting & Planning for Dynamics Finance With Solver

October 24, 2024

Objectives

1. Explain how Solver's reporting functionality can be used for both finance & non-finance data
2. Describe how Solver's planning functionality can be used for budgeting, forecasting, & pro forma data
3. Outline how Solver can be used with Dynamics 365 Finance to facilitate Power BI reporting



Agenda

1.Introduction to Solver

2.Reporting

3.Planning



01

Introduction

Define Solver xFP&A.



Solver xFP&A

Introduction

What is Solver?



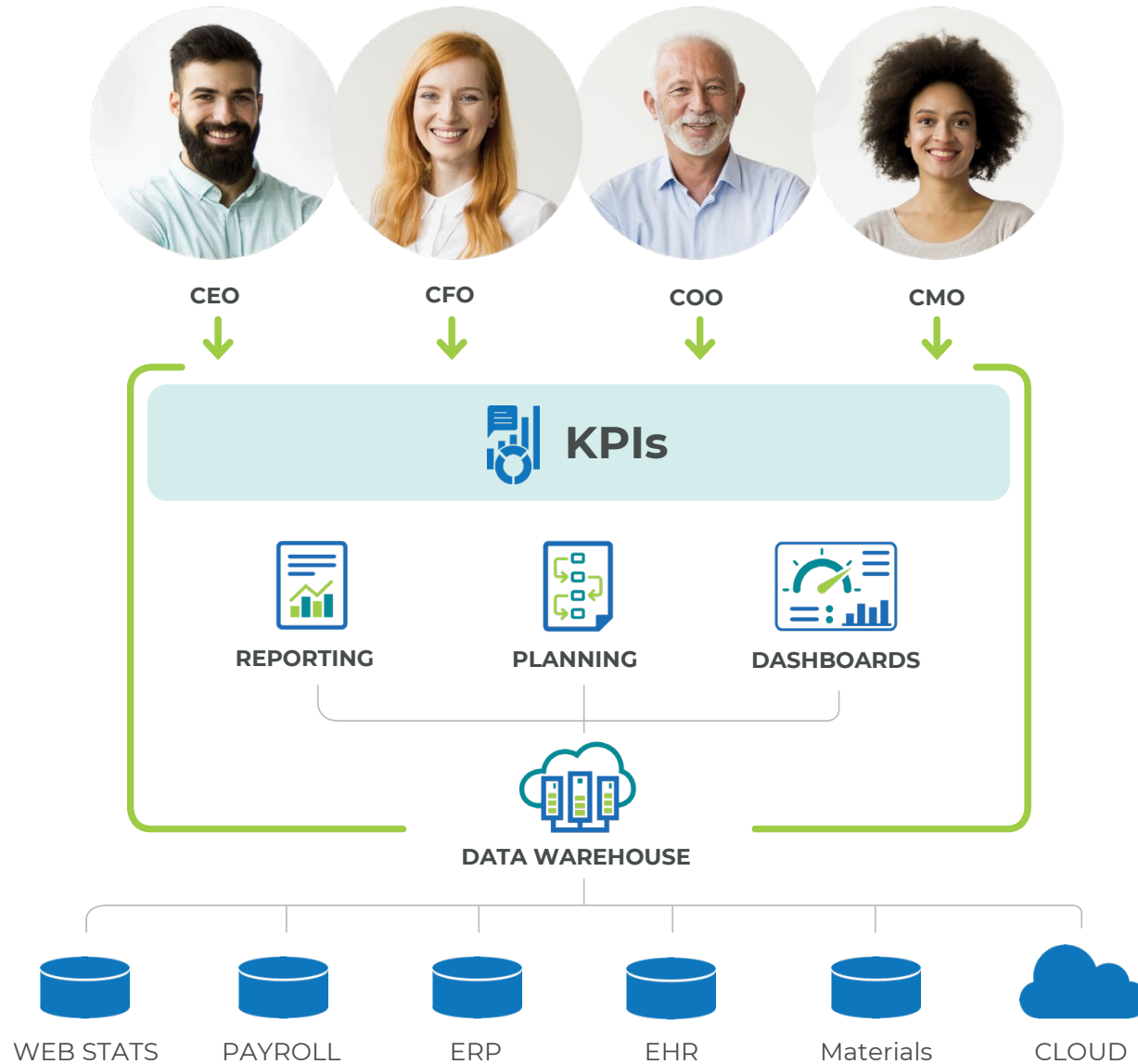
Solver xFP&A

Introduction

What companies can benefit from Solver?

- Need to combine ERP & other data (POS, membership, payroll, etc.) for reporting & planning. It is particularly beneficial for businesses operating with different ERP/financial systems that need to consolidate multiple data silos
- Multi-entity organization needing financial consolidations & eliminations or global organizations requiring currency conversion capabilities
- Looking for detailed, decentralized budgeting & forecasting beyond the GL account & sub-account level, with support for continuous planning processes across business units. The Solver Suite also caters to continuous budgeting & forecasting requirements
- Seeking to move away from a spreadsheet-based process for budgeting & forecasting. It is also compatible with Power BI or Tableau
- Want to benefit from modeling scenarios, such as what-if analysis, multi-scenario planning, predictive planning, & financial, operational, or statistical allocations

Solver provides key insights across the organization.



Complete Insight...

Faster, Better Decisions

Key Benefits

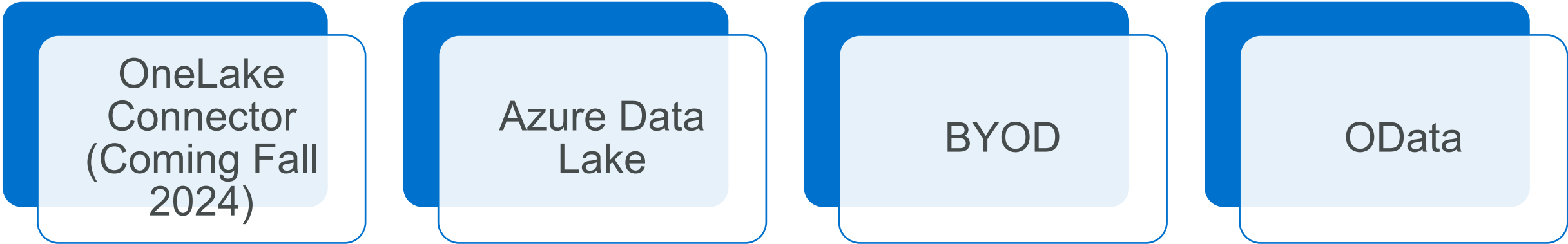
- Single cloud portal and database
- Rapid configuration with Templates
- Quick time to value
- Combines the best of CPM and BI

Solver Apps

- Process automation
- KPIs and Alerts
- Dashboards
- Reporting & Consolidation
- Budgeting & Forecasting
- Intelligent Data Warehouse
- Marketplace with Templates
- Data source connectors

Dynamics 365 Finance Integration Connectors

Options



02

Reporting

Creating reports.



The Overloaded Manager



Reporting Challenges

Typical Reporting Situation

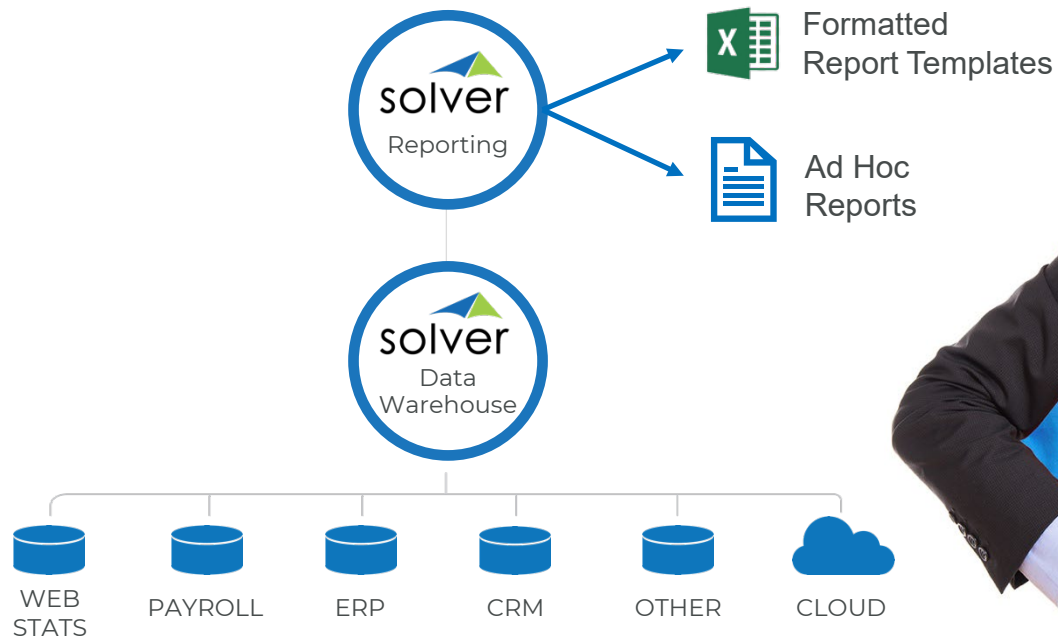
- **MANY** data sources
- **MANY** reporting tools
- **MANY** Excel models

Solver to the Rescue

Cloud-based Reporting & Consolidations

- **ONE** database (DW)
- **ONE** reporting tool
- **ONE** user interface (portal)

The Reporting Hero



Reporting

Creating Reports

The Process

Start a New Report



Create & Test It



Publish the Report

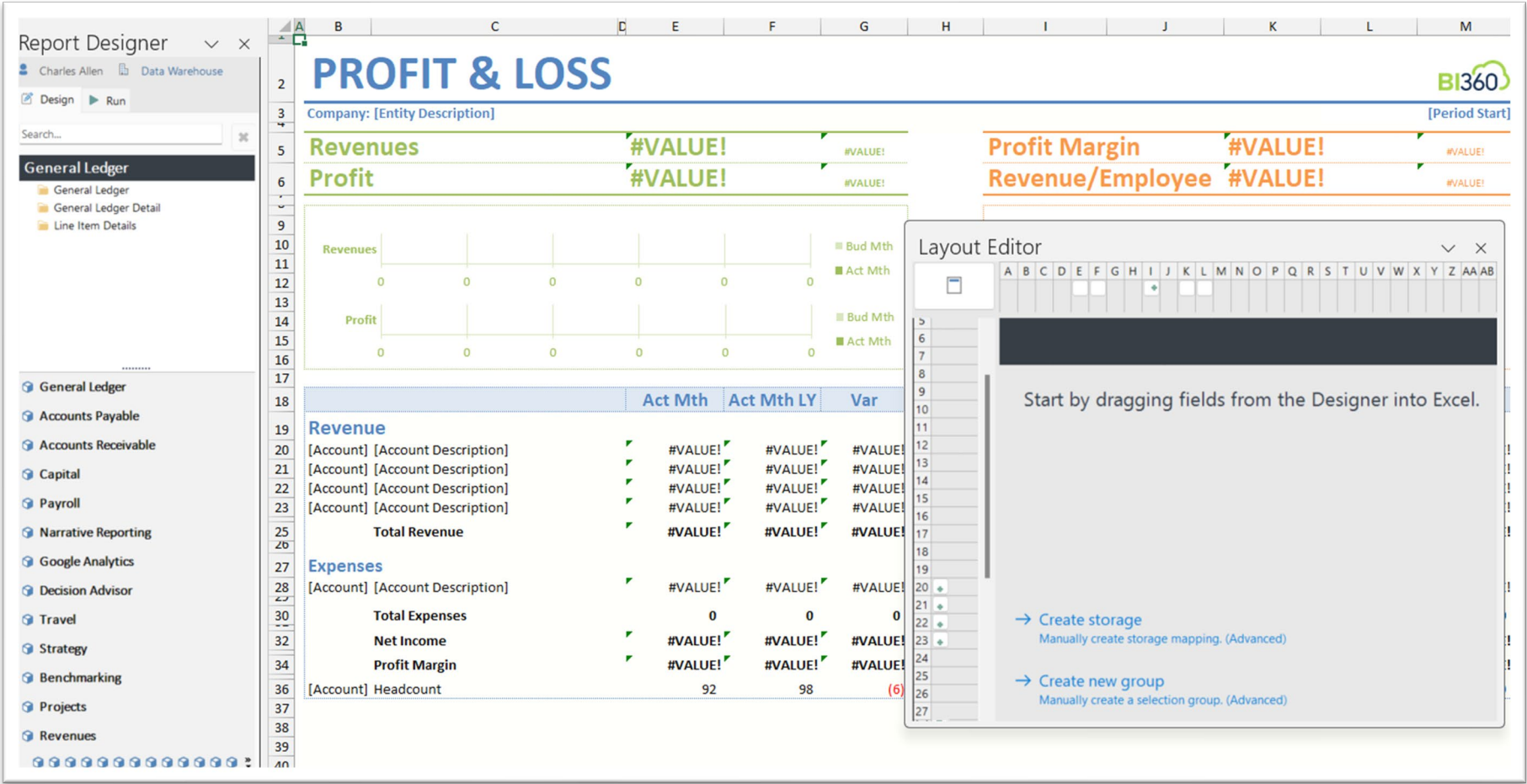


Share the Template

Reporting

Creating Reports

The Process



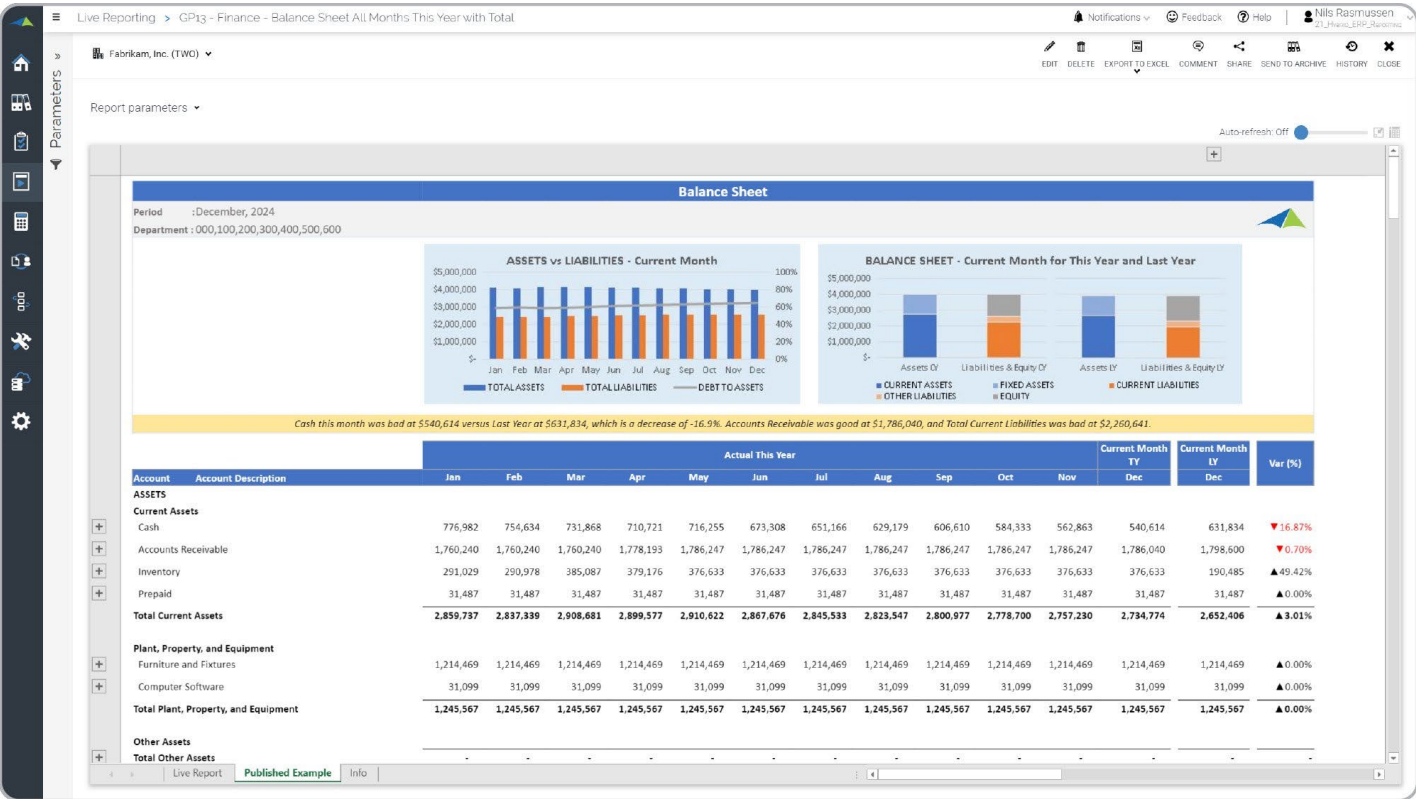
Viewing



Report Templates Samples

Balance Sheet – Trended

- Report shows all months this year vs. last year (expandable to see months) with trend charts



Report Templates Samples

Financial Flash Report

- Combines actual, budget, & variances for key figures from P&L, BS, & statistics

Live Reporting > R410 - KPI Flash Report

Notifications Feedback Help Nils Rasmussen

EDIT DELETE EXPORT TO EXCEL COMMENT SHARE SEND TO ARCHIVE HISTORY CLOSE

Report parameters

Auto-refresh: Off

Monthly Flash Report

September, 2021

Corporate US

U.S. Dollars

	September-2021				August-2021		September-2020		Jan-2021	Feb-2021	Mar-2021	Apr-2021
	Actual	2020 Actual	BUD	% Var	Actual	% Var	Actual	% Diff				
PROFIT & LOSS METRICS												
Revenue	1,363,145	1,271,357	1,267,233	107.6%	1,600,649	117.4%	1,271,357	107.2%	1,412,700	1,290,538	1,317,295	
Expenses	930,355	980,306	931,380	99.9%	1,194,073	128.3%	980,306	94.9%	969,196	954,696	997,342	
Other Expenses	89,671	89,731	84,107	106.6%	106,850	119.2%	89,731	99.9%	90,395	86,361	96,452	
Net Income [\$]	432,791	201,320	251,746	171.9%	299,727	69.3%	201,320	215.0%	353,109	249,481	223,501	
Net Income [%]	31.7%	15.8%	19.9%	159.8%	18.7%	59.0%	15.8%	200.5%	25.0%	19.3%	17.0%	
Return on Assets (ROA)	19.9%	-681.4%	0.0%	0.0%	19.7%	98.8%	19.8%	100.8%	25.6%	19.1%	18.5%	
BALANCE SHEET METRICS												
Cash	1,027,218	(62,676)		0.0%	941,942	91.7%	(62,676)	-1638.9%	769,583	768,897	717,510	
Current Ratio	2.68	(6.08)	0.00	0.0%	2.55	95.0%	2.30	116.8%	2.48	2.44	2.26	
Accounts Receivable (Current)	151,845	1,798		0.0%	149,989	98.8%	1,798	8445.8%	135,567	137,451	139,599	
Accounts Payable (Current)	117,473	2,167		0.0%	115,444	98.3%	2,167	5420.8%	100,697	102,755	105,035	
Debt to Equity	0.19	0.06	0.00	0.0%	0.20	107.8%	0.16	116.3%	0.52	0.43	0.37	
Debt to Assets	0.40	(0.44)	0.00	0.0%	0.41	103.0%	0.43	92.5%	0.42	0.42	0.44	
DATA METRICS												
Employee Headcount	78	73	76	102.5%	78	100.0%	73	106.8%	71	71	72	
Avg Revenue per Day	19,199	0	1,906	1007.5%	22,544	117.4%	17,906	107.2%	19,897	18,177	18,296	
Gross Revenue/Headcount	17,476	17,416	16,652	104.9%	20,521	117.4%	17,416	100.3%	19,897	18,177	18,296	

KPINotes

P&L Consolidating Report

- Report Templates** > **R150 - P&L Consolidating Report_Up...**

Edit In Report Designer | Export | Comment | Share | Add to Archive ...

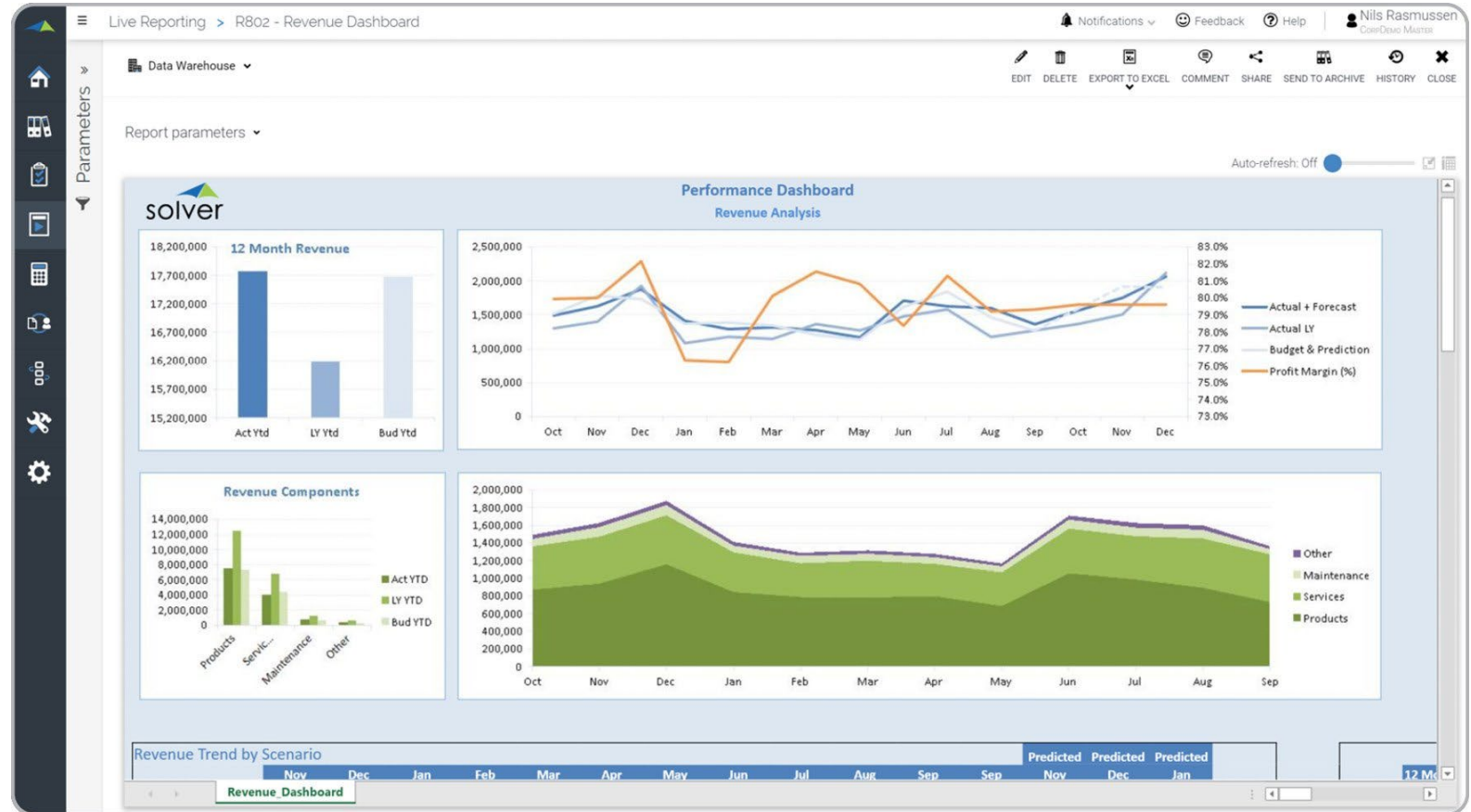
Report parameters ▾

Consolidating P&L - Year to Date									
Consolidating September 30, 2021									
YTD revenue for the current year is \$7,891,296 versus last year YTD revenue of \$7,069,622 which is an increase of 10.4%. The Net Profit for the year is \$151,445, which is an increase of 126.3%.									
	SAS YTD Actual	SCA YTD Actual	Last Year YTD Actual	SAS YTD Actual	SCA YTD Actual	Current Year YTD Actual	SAS YTD Budget	SCA YTD Budget	Current Year YTD Budget
REVENUE									
Total Sales Revenue	4,098,047	2,759,393	6,857,440	4,723,445	2,940,291	7,663,736	4,597,582	2,881,549	7,663,736
Total Other Revenues	127,076	85,106	212,182	142,048	85,512	227,560	130,223	69,515	227,560
TOTAL REVENUE	4,225,123	2,844,499	7,069,622	4,865,493	3,025,803	7,891,296	4,727,805	2,951,064	7,891,296
COST OF GOODS SOLD									
Total Cost of Sales	876,163	583,912	1,460,075	1,010,544	600,172	1,610,716	959,423	616,974	1,610,716
TOTAL COST OF GOODS SOLD	876,163	583,912	1,460,075	1,010,544	600,172	1,610,716	959,423	616,974	1,610,716
GROSS PROFIT	3,348,961	2,260,587	5,609,548	3,854,949	2,425,632	6,280,580	3,768,382	2,334,090	6,280,580
OPERATING EXPENSES									
Total Salaries and Benefits	1,321,371	872,063	2,193,433	1,487,110	910,743	2,397,853	1,395,462	847,588	2,397,853
Total Sales and Marketing	1,554,670	1,017,975	2,572,645	1,737,143	1,060,014	2,797,157	1,723,964	1,005,444	2,797,157
Total Travel and Entertainment	10,070	6,579	16,649	11,167	6,990	18,157	10,864	6,663	18,157
Total Professional Fees	72,320	48,565	120,885	81,679	49,830	131,509	81,086	49,115	131,509
Total Bad Debt	359	233	592	396	246	642	375	242	642
Total Business Insurance	14,199	9,625	23,824	16,316	9,997	26,313	15,507	10,152	26,313
Total Office Supplies	15,448	10,297	25,744	17,561	10,783	28,343	17,418	10,356	28,343
Total Telephone and Internet	39,751	26,395	66,146	44,530	27,335	71,866	44,481	26,311	71,866
Total Rent and Utilities	32,936	22,009	54,945	36,916	23,062	59,978	35,425	22,775	59,978
Total Admin Expenses	39,667	26,455	66,122	44,440	27,550	71,990	42,838	26,789	71,990
TOTAL OPERATING EXPENSES	3,100,791	2,040,196	5,140,987	3,477,257	2,126,551	5,603,809	3,367,421	2,005,434	5,603,809

Report Templates Samples

Revenue Dashboard

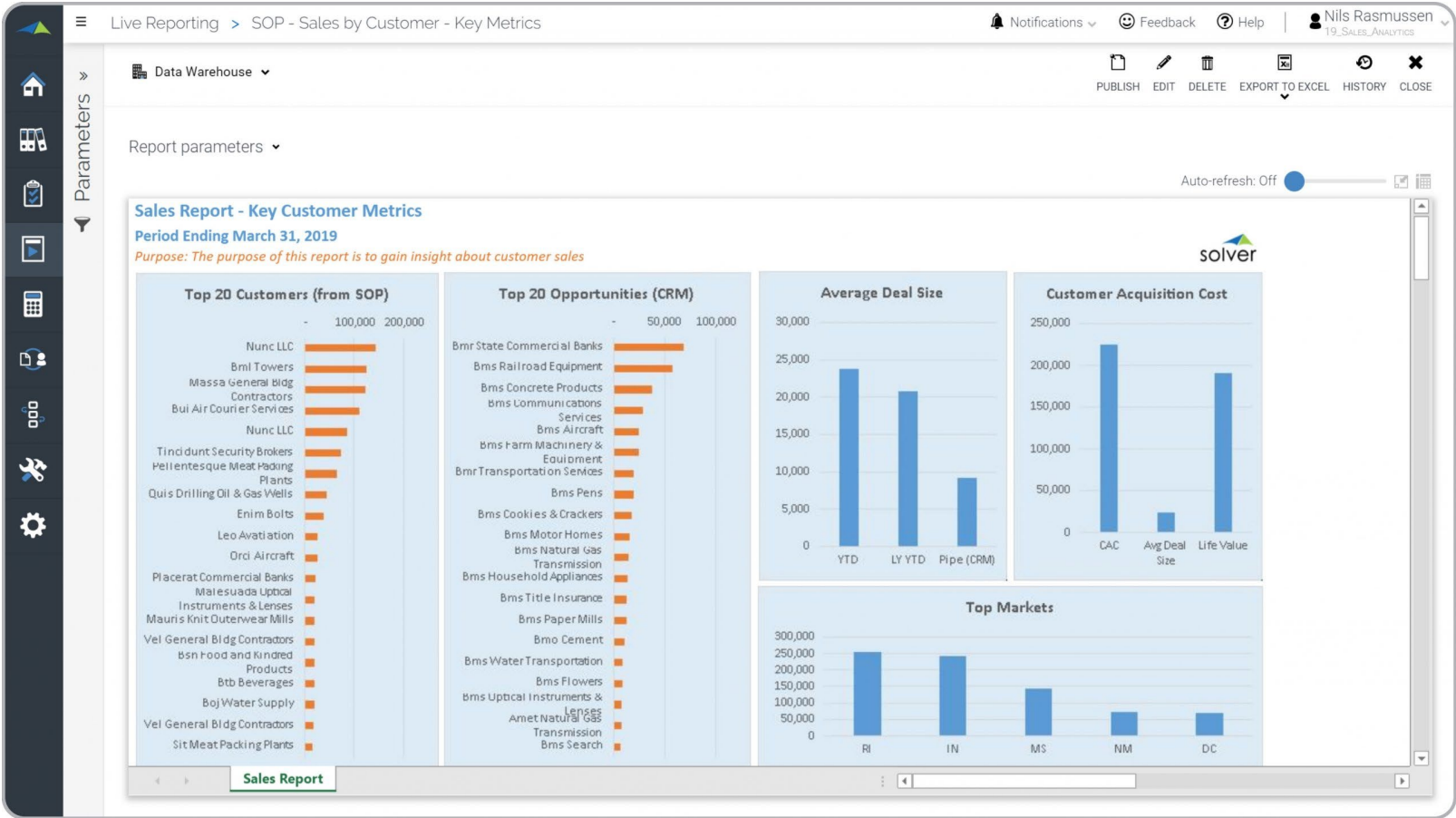
- Shows 15-month graphical trend analysis of revenue categories with budget & predictions



Report Templates Samples

Pipeline & Sales Combo Report

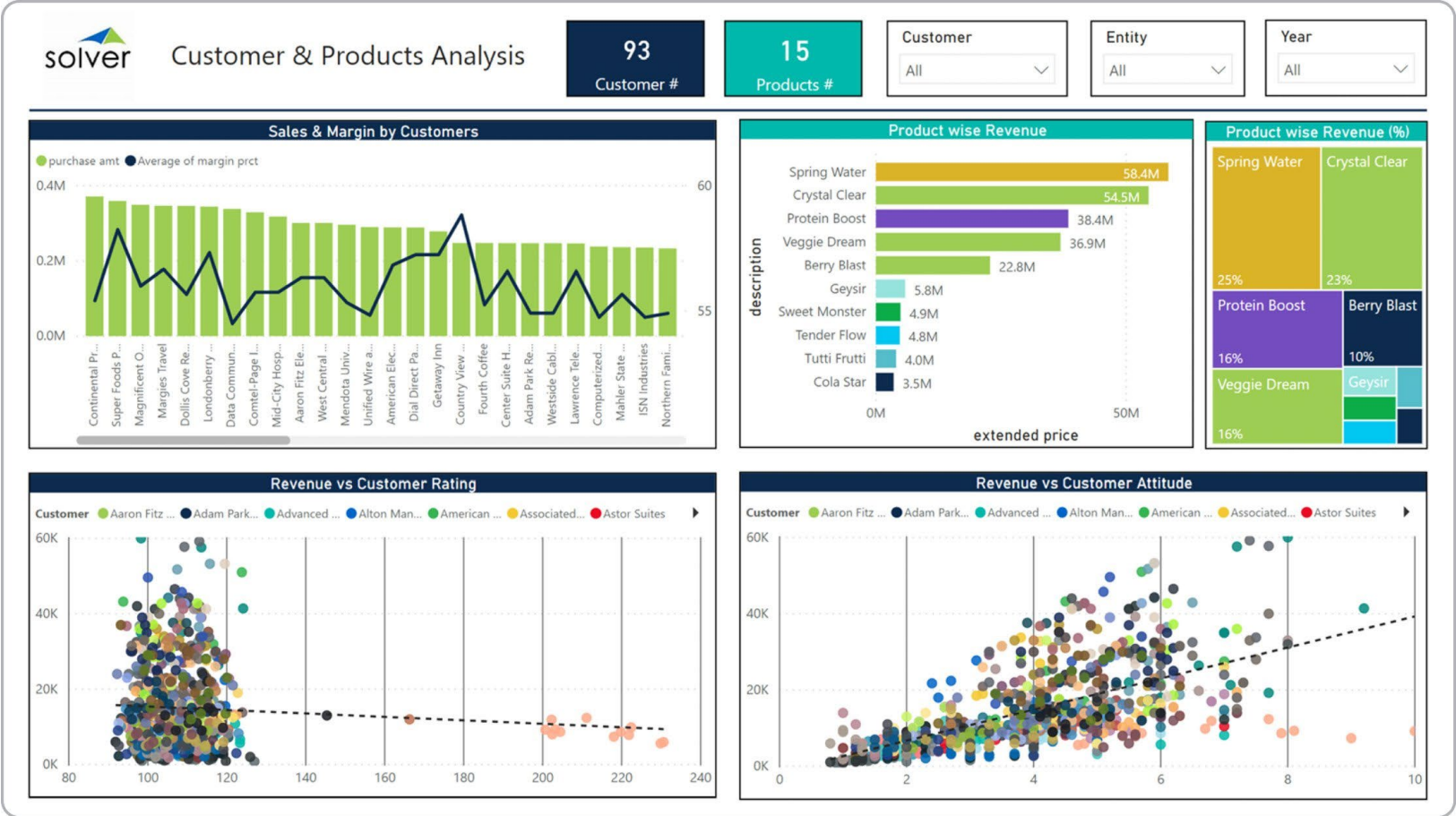
- Combines pipeline estimates with actual sales & key metrics for deal size & sales cost



Power BI Templates Samples

Customer & Products Analysis

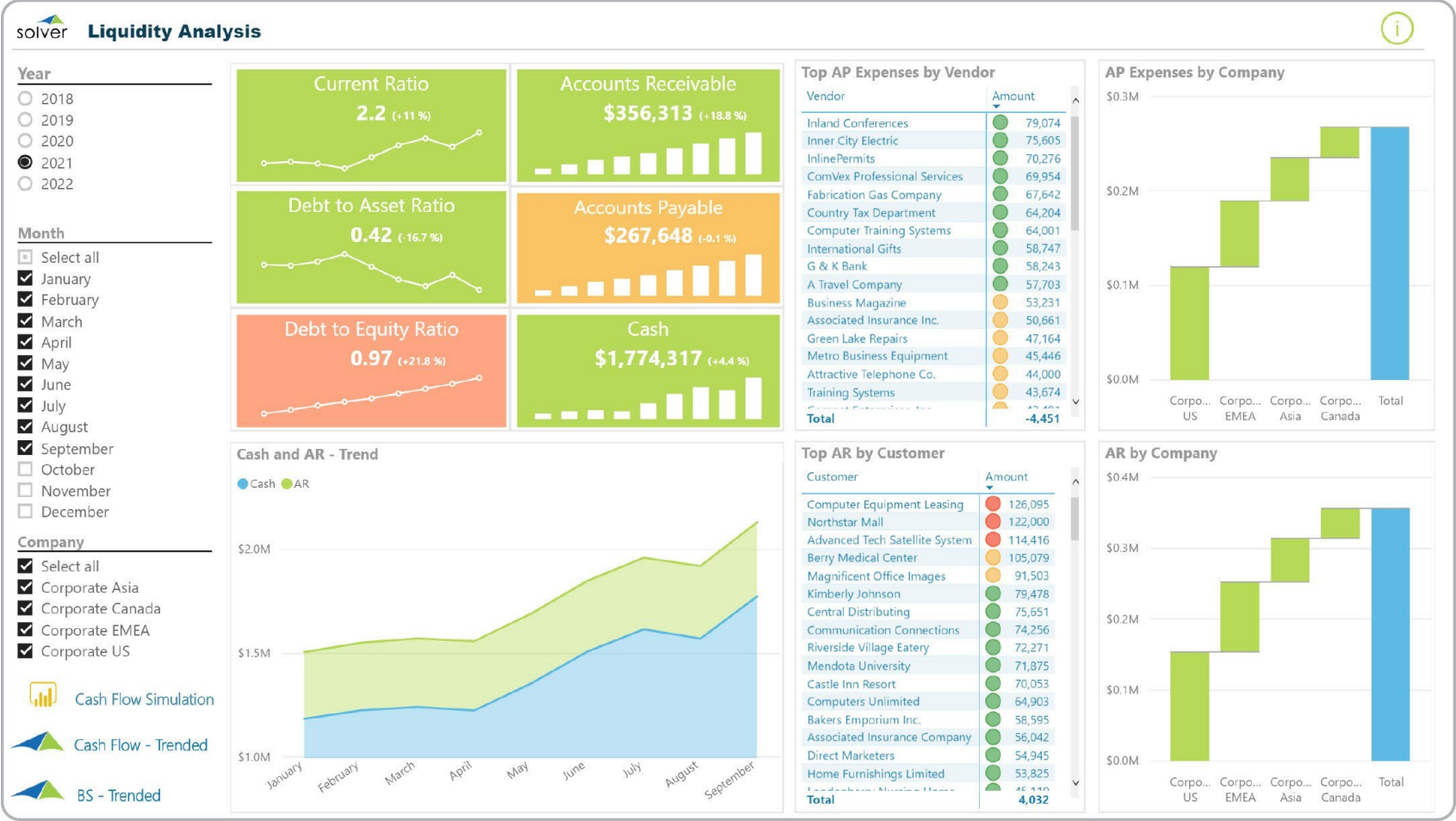
- Distribution dashboard with customer & product analysis



Power BI Templates Samples

Liquidity Analysis

- Power BI dashboard showing analysis of AR, AP, & Cash with ranked lists & trends



Reporting

Ad Hoc Reporting

Viewing Data

SaveExportRevert to savedPivot

Data Warehouse

Revenue for 12 Months

	202010	202011	202012	202101	202102	202103	Total
Account Account Description	Monthly Amount	Monthly Amount	Monthly Amount	Monthly Amount	Monthly Amount	Monthly Amount	Monthly Amount
40040 Other Revenue	-38,138.49	-51,498.62	-11,123.56	-56,726.63	955.59	-50,243.25	-934,081.63
40010 Product Revenue	561,205.06	-262,573.96	-10,669.02	919,402.17	-3,206,190.89	-270,295.80	-9,386,404.68
40020 Services Revenue	-200,568.59	454,755.17	615,666.21	1,112,763.82	1,222,493.76	625,499.61	1,166,822.80
40030 Maintenance Revenue	-90,378.58	-226,995.50	-109,340.64	96,694.74	75,776.39	-108,513.22	-1,086,586.34
	232,119.40	-86,312.91	484,532.99	2,072,134.11	-1,906,965.14	196,447.33	-10,240,249.85

Rows: 48Row limit: 1,000

Last refreshed: 1 second agoDuration: 0.22sRefresh

Demo



03

Solver Planning

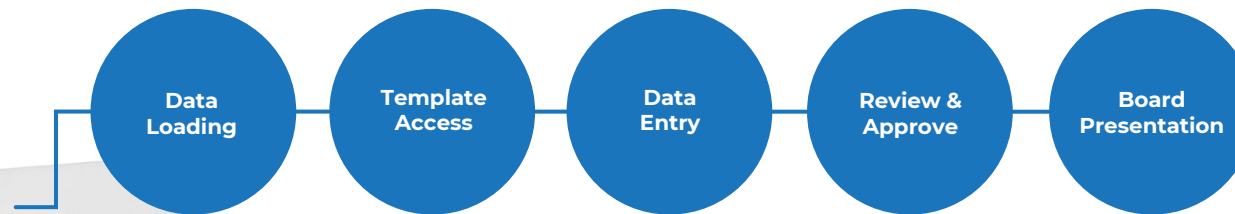
Budgeting, forecasting, & other input.



The Spreadsheet Juggler



The Decision Optimizer



Planning Challenges

Spreadsheet Budgeting & Forecasting

- Manual data loading
- Manual spreadsheets
- Manual template distribution
- Manual workflow
- Manual comments & line items
- Manual forecasting & modeling

Solver to the Rescue

Cloud-based Budgeting & Forecasting

- Data integration
- Parameter-driven models
- Web-based data entry
- Budget workflow
- Built-in comments & line items
- Dynamic forecasting & modeling

Planning Creating Plans

The Process

Start a New Plan



Create & Test It



Publish the Plan



Share the Template

Planning Creating Plans

The Process

Report Designer

Charles Allen | Data Warehouse

Design | Run

Search...

General Ledger

General Ledger

General Ledger Detail

Line Item Details

General Ledger

Accounts Payable

Accounts Receivable

Capital

Payroll

Narrative Reporting

Google Analytics

Decision Advisor

Travel

Strategy

Benchmarking

Projects

Revenues

Report Designer v5.3.10314

1

2

3

4

5

10

11

12

13

15

16

17

18

19

20

21

22

24

26

27

28

30

31

32

33

36

37

38

39

40

41

42

43

44

45

A

B

C

E

F

G

H

I

J

K

L

Other Expenses

[Entity Description]

[Department Description]

[Scenario Description]

Account	Description	Dept Comment	Budget [FY]	#VALUE! Total	Actual [FY]	Forecast [FY]	#VALUE! Total
Operating Expenses							
[Account]	[Account Description]	[Variance Comments]	[Monthly Amount]	0	#VALUE!	#VALUE!	0
Budget to Accounts with No History							
Accounts Budgeted on Other Forms							
[Account]	[Account Description]						
Total Expenses							
Total Expenses Last Year							
Total Expenses Budget							
Variance							

Layout Editor

Cell F13

Define storage

Store to: General Ledger | Monthly Amount

Mandatory fields

Account: [Account]

Entity: @Entity

Scenario: @Scenario

Category: 'MAIN'

Currency: =D8

Department: @Department

Period: [Period]

Source System: 'FORM_OPEX'

Comparable data

Filters | Grouping/Sorting | Period Aggregation | Drill-To | Budgeting

Planning Using Plans

The Process

Other Expenses																		
Corporate US																		
Administration																		
Budget																		
Account	Description	Dept Comment	Budget Jan	Budget Feb	Budget Mar	Budget Apr	Budget May	Budget Jun	Budget Jul	Budget Aug	Budget Sep	Budget Oct	Budget Nov	Budget Dec	2023 Total	Actual Jan	Actual Feb	
Operating Expenses																		
62010	Marketing		381,336	311,622	289,992	248,493	248,493	394,536	392,516	352,578	324,172	312,462	357,064	413,000	4,026,264	167,612	161,207	1
62020	Conference and seminars		1,771	1,223	1,595	1,348	1,157	1,632	1,821	1,451	1,168	1,290	1,471	2,037	17,964	1,399	1,249	
62030	Advertising		523	471	489	443	413	524	508	565	425	462	596	716	6,135	427	431	
62040	Gift and donations		500	600	175			175			175			175	1,800	44	50	
63010	Travel		2,991	2,991	2,991	2,991	2,991	2,991	2,991	2,991	2,991	2,991	2,991	2,991	35,897	803	759	
63020	Special events		205	167	142	154	133	222	207	157	180	148	191	210	2,116	174	148	
64010	Consulting		3,268	3,423	3,212	3,158	2,672	4,344	4,007	3,669	2,781	3,580	3,361	4,399	41,874	3,077	3,435	
64020	Audit and Accounting		529	576	516	497	536	749	790	669	622	651	657	785	7,577	552	673	
64030	Legal		2,966	3,055	2,748	2,522	2,365	3,030	3,921	3,247	2,832	2,827	3,395	4,383	37,291	3,010	3,121	
64040	Contractual Services		524	415	501	476	435	547	554	540	476	562	519	700	6,249	540	474	
64050	Training		34	34	38	35	29	42	39	43	38	38	48	48	466	38	33	
65010	Bad Debt Expense		41	37	34	28	30	49	47	41	36	40	42	55	480	33	38	
66010	Insurance		1,863	1,351	1,584	1,420	1,254	1,823	1,770	1,795	1,613	1,426	1,747	1,890	19,536	1,342	1,514	
67010	Office Supplies		1,050	1,260	1,050	1,050	1,050	1,050	1,050	1,050	1,050	1,050	1,050	1,050	12,810	1,070	1,088	
67020	Other Supplies														0	519	547	
68010	Hosting Fees		126	103	127	103	98	139	135	125	125	106	129	163	1,479	102	119	
68020	Telephone		3,254	2,717	2,649	2,342	2,587	4,032	3,295	2,929	2,812	2,980	3,502	3,840	36,939	3,214	3,063	
68030	Telephone - Cellular		1,229	915	985	814	861	1,120	1,086	1,036	1,010	932	1,248	1,401	12,637	1,012	962	
69010	Electricity		56	54	68	58	51	82	68	82	67	66	65	82	799	53	51	
69020	Natural Gas		50	52	57	51	54	68	72	71	60	57	64	87	743	52	53	
69030	Rent		3,375	2,789	2,662	2,636	2,605	3,454	3,050	3,618	3,318	3,116	3,628	4,414	38,665	3,269	2,845	
69040	Repairs and maintenance		222	245	224	186	184	274	245	282	208	211	256	328	2,865	248	241	
70010	Printing and Publications		129	106	105	101	105	155	155	121	104	112	133	147	1,473	115	108	
70020	Postage		534	540	582	521	451	697	574	639	450	608	667	691	6,954	541	546	
70030	Dues, Licenses and Permits		3,465	2,483	3,149	2,743	2,518	4,036	3,626	3,161	2,755	3,266	3,104	4,280	38,586	3,254	2,924	
70040	Books and Subscriptions		297	281	294	295	277	398	439	391	323	290	374	441	4,100	288	324	
70050	Bank charges		47	35	41	35	36	50	55	48	42	41	46	54	530	38	40	
70060	Miscellaneous expenses		86	70	75	74	53	92	92	78	66	68	89	98	941	69	65	
75010	Taxes		34,189	91,015	49,340	92,295	91,804	1,647	5,218	24,876	67,449	43,484	18,104		519,422	16,915	14,125	
76010	Interest		1,733	1,315	1,270	1,172	1,273	1,699	1,533	1,404	1,390	1,340	1,549	1,936	17,614	1,224	1,437	
Budget to Accounts with No History																		
															0			

Reporting Creating Plans

Other Options

Set Up Planning Security



Create Input Flows



Create Workflows

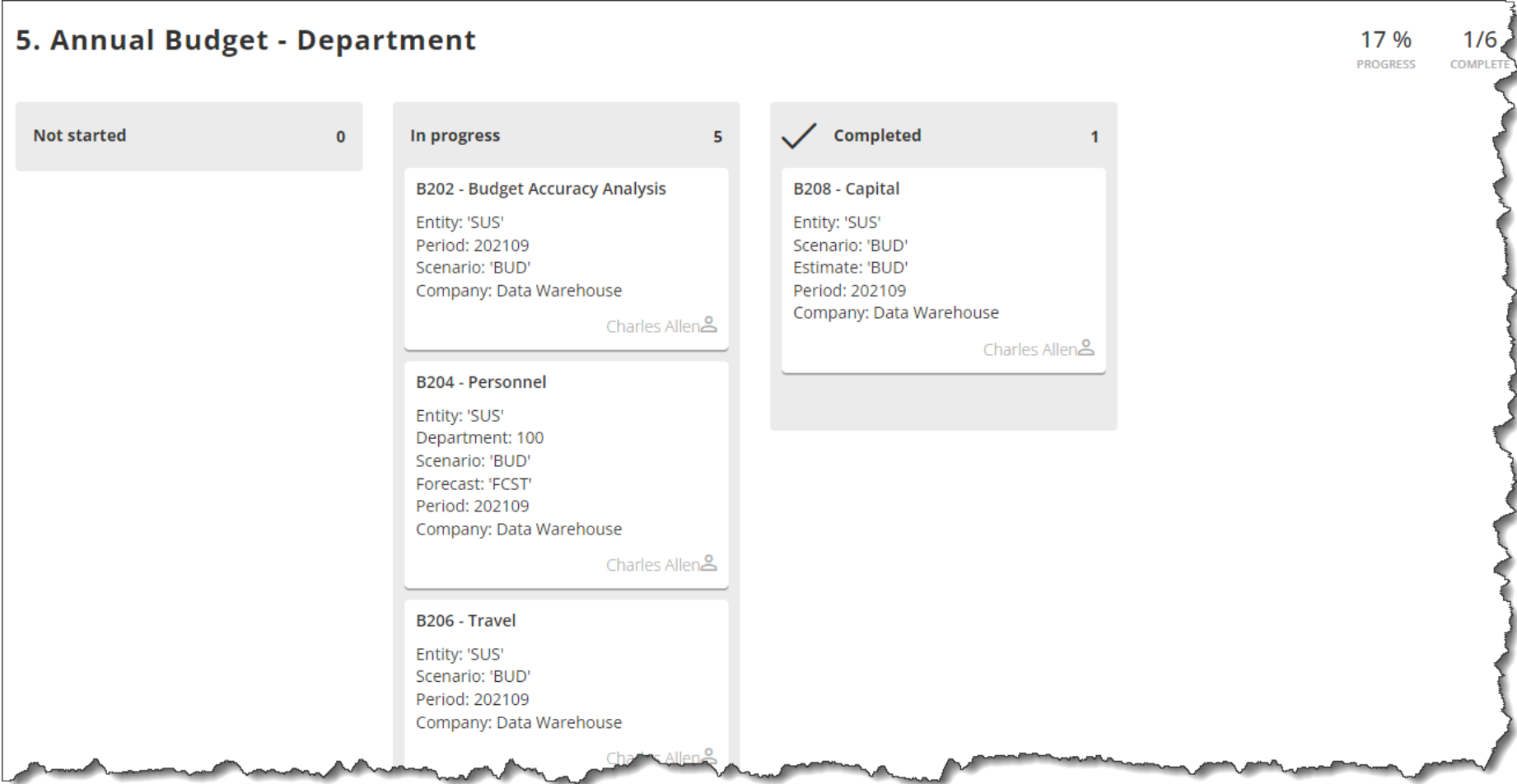


Begin the Process

Planning

Creating Plans

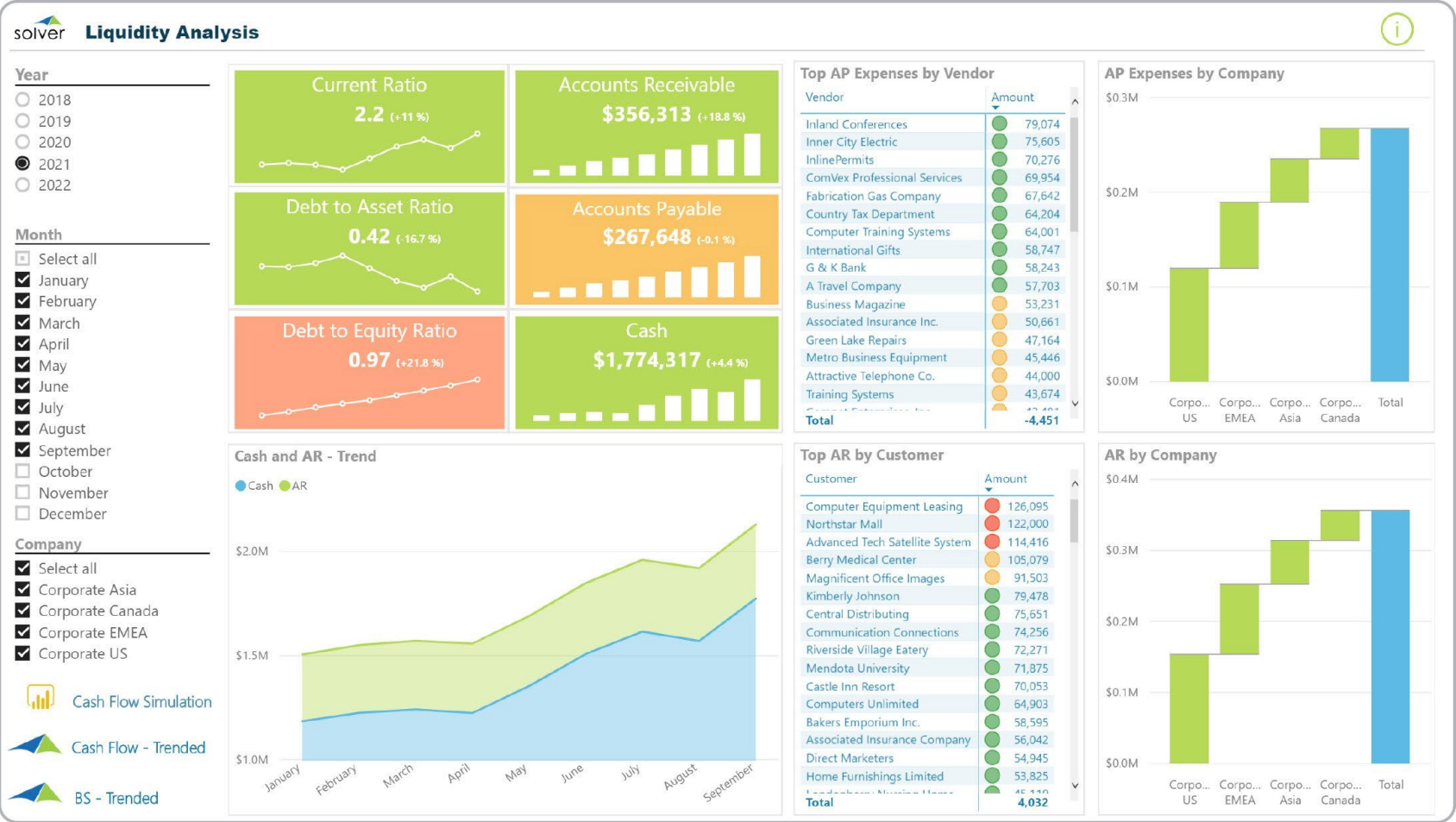
Other Options



Planning Templates Samples

Breakback (Top-Down Budget)

- Input net income target & algorithms automatically create revenue & expense budgets



Planning Templates Samples

Sales Forecast

- Enter sales target & the form generates the forecast, then override where desired

Budgeting > Sales Driver Based Forecast

Notifications Feedback Help Nils Rasmussen CoreDemo Master

Data Warehouse

Report parameters

Solver Sales Driver Based Forecast

Sales Forecast Summary Sales

Var % CY Target vs Bud -15%

Full Year Sales Target: 12,000,000

Sales people with red highlight have additional manual adjustments

Sales Person	FY Budget Total	Adjustment Type	FCST Adjustments	ACT January	ACT February	ACT March	FCST April	FCST May	FCST June	FCST July	FCST August	FCST September	FCST October	FCST November
Aria Hafner	1,941,000	Final Forecast			161,516	43,220	127,061	115,519	147,837	132,412	105,971	94,429	160,952	1
Brian Morton	916,000	Final Forecast		63,517	57,035	57,323	60,680	55,233	70,485	63,206	50,727	45,280	76,674	
Casey Garcia	828,000	Final Forecast		76,569	34,400	52,000	54,981	50,058	63,844	57,264	45,984	41,061	69,439	
Christian Marshall	865,000	Final Forecast		59,200	62,400	59,998	57,377	52,234	66,636	59,762	47,979	42,835	72,481	
		Driver Based Forecast		61,000	67,600	62,000	58,868	53,463	68,598	61,375	48,992	43,586	74,740	
		Additional Auto Spread					-	-	-	-	-	-	-	
		Override Driver FCST by %	10.00%				64,755	58,809	75,458	67,512	53,891	47,945	82,214	
		Manual Adjusted Value						60,000				40,000		
Elizabeth Laffey	909,000	Final Forecast		61,000	67,600	62,000	64,755	60,000	75,458	67,512	53,891	40,000	82,214	
Hailey Brantley	1,494,000	Final Forecast		217,021	148,977	75,525	98,112	89,229	114,104	102,231	81,879	72,995	124,199	1
Jorge Narveson	848,000	Final Forecast		44,200	56,497	72,000	56,276	51,234	65,353	58,614	47,062	42,020	71,083	
Jorge Rowand	1,833,000	Final Forecast		210,951	245,030	134,043	120,067	109,167	139,686	125,120	100,150	89,250	152,072	1
Kurt Stults	787,000	Final Forecast		78,122	48,800	65,126	52,326	47,646	60,750	54,496	43,775	39,095	66,068	
Neftali Crisp	1,940,000	Final Forecast			48,445	59,477	126,996	115,460	147,761	132,345	105,917	94,381	160,870	1
Riley Cust	1,737,000	Final Forecast		134,365	42,978	269,529	113,850	103,521	132,442	118,638	94,976	84,647	144,179	1
Total	14,098,000			2,834,835	2,921,035	2,850,723	3,696,874	3,422,304	4,303,386	3,853,097	3,081,172	2,768,331	4,686,285	4,4

Forecast Instructions

Spreading and Line item details

Planning Templates Samples

Vendor Expense Budget

- Enter budgeted expenses per vendor. Actual history from ERP can also be integrated

Budgeting > B702 - Expenses by Vendor

Notifications Feedback Help Nils Rasmussen

Data Warehouse

Report parameters

Other Expenses by Vendor
Corporate US
Administration
Budget
Demo Note: this form is not to be used for storage purposes, but is an example.

Acct	Vendor	Budget Jan	Budget Feb	Budget Mar	Budget Apr	Budget May	Budget Jun	Budget Jul	Budget Aug	Budget Sep	Budget Oct	Budget Nov	Budget Dec	2022 Total
Operating Expenses	Vendor 1	187,168	150,811	144,996	124,247	124,247	197,268	196,258	176,289	162,086	156,231	178,532	206,500	2,004,632
62010 Marketing	Vendor 1	1,571	1,223	1,595	1,348	1,157	1,632	1,821	1,451	1,168	1,290	1,471	2,037	17,764
	Vendor 2			3,000			4,000							
	Vendor 4	3,050	3,050	3,050	3,050	5,000	3,050	3,050	3,050	3,050	3,050	3,050	3,050	
62020 Conference and seminars	Vendor 1	4,621	4,273	7,645	4,398	6,157	8,682	4,871	4,501	4,218	4,340	4,521	5,087	63,314
		473	471	489	443	413	524	508	565	425	462	596	716	6,085
62030 Advertising	Vendor 1	473	471	489	443	413	524	508	565	425	462	596	716	6,085
		155	167	142	154	133	222	207	157	180	148	191	210	2,066

Other Expenses Directions

Spreading and Line item details

Demo



Solver Templates Marketplace & Examples

<https://www.solverglobal.com/marketplaces-templates>

MARKETPLACE

SHOWCASE

Enter search phrase

QSearch

SORT

FUNCTIONALITY

Reports

Planning

Dashboard

Connector

DATA SOURCE

Select a Data Source

Share Search Results

Summary Level Sales Dashboards

Sales Summary Dashboard provides information on revenue, average deal size, with views for top ...

Sales Team Focused Sales Dashboard

PowerBI Dashboard providing sales team focused sales information such as top sales persons sale...

Item Focused Sales Dashboard

PowerBI Dashboard providing item focused sales information such as top 10 items sold month to d...

Customer Focused Sales Dashboard

PowerBI Dashboard providing customer focused sales information such as top 10

CRM Opportunities - Sales Person Summary

CRM report offering sales person summary of active in deals in both granhiral and

Asset & Liability Analysis - Variances and Trends

Graphical variance and trend analysis of Asset and Liability categories

Q&A



Business
Technology
Services

Questions?

Contact

Forvis Mazars



Charles Allen

Senior Managing Consultant

charles.allen@us.forvismazars.com

The information set forth in this presentation contains the analysis and conclusions of the author(s) based upon his/her/their research and analysis of industry information and legal authorities. Such analysis and conclusions should not be deemed opinions or conclusions by Forvis Mazars or the author(s) as to any individual situation as situations are fact-specific. The reader should perform their own analysis and form their own conclusions regarding any specific situation. Further, the author(s)' conclusions may be revised without notice with or without changes in industry information and legal authorities.

© 2024 Forvis Mazars, LLP. All rights reserved.